

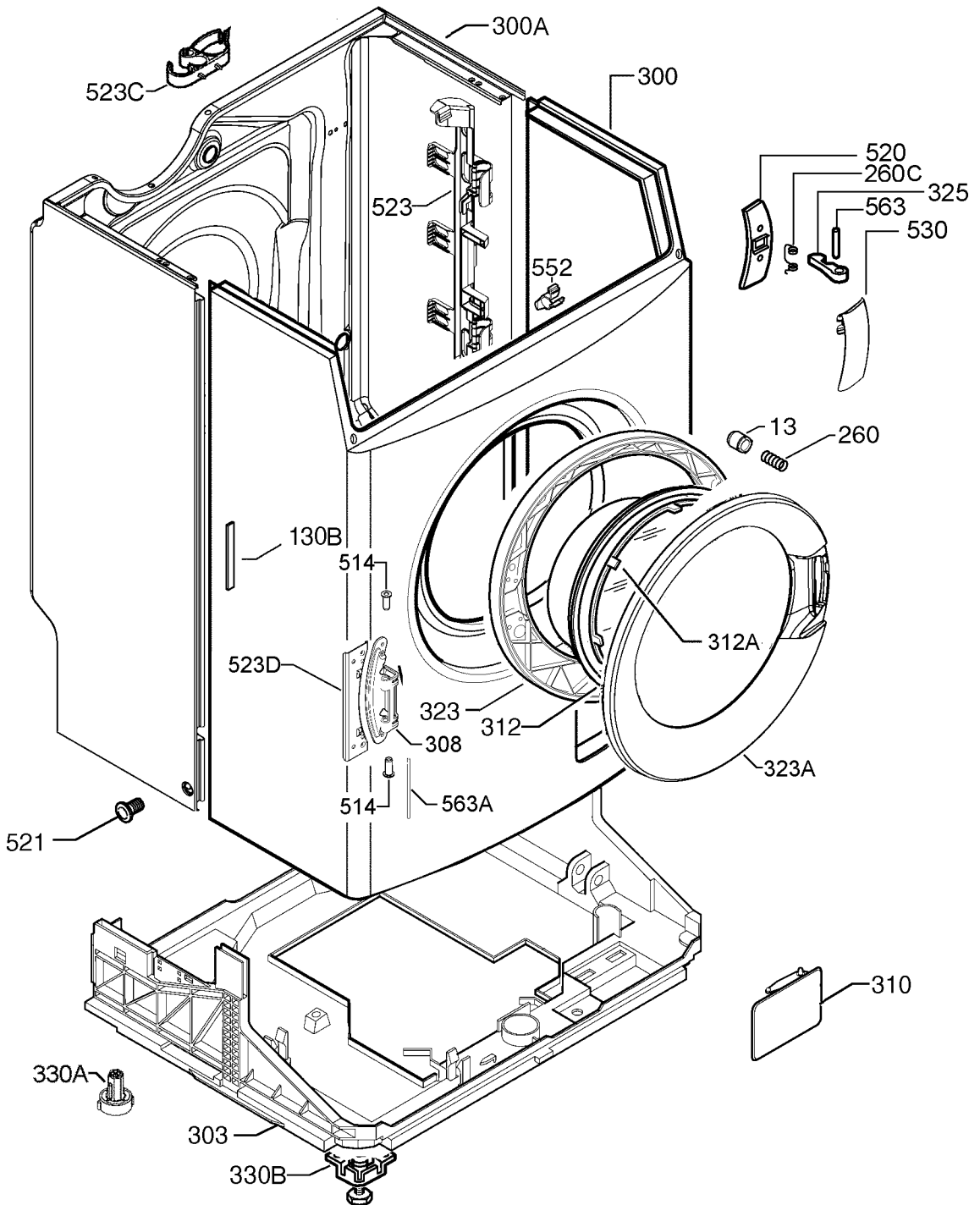
Household washing machines
2530

PNC	ELC	Brand	Model	Market
914900232	00	Electrolux	EWW1273	TH

Wash and dryer machines

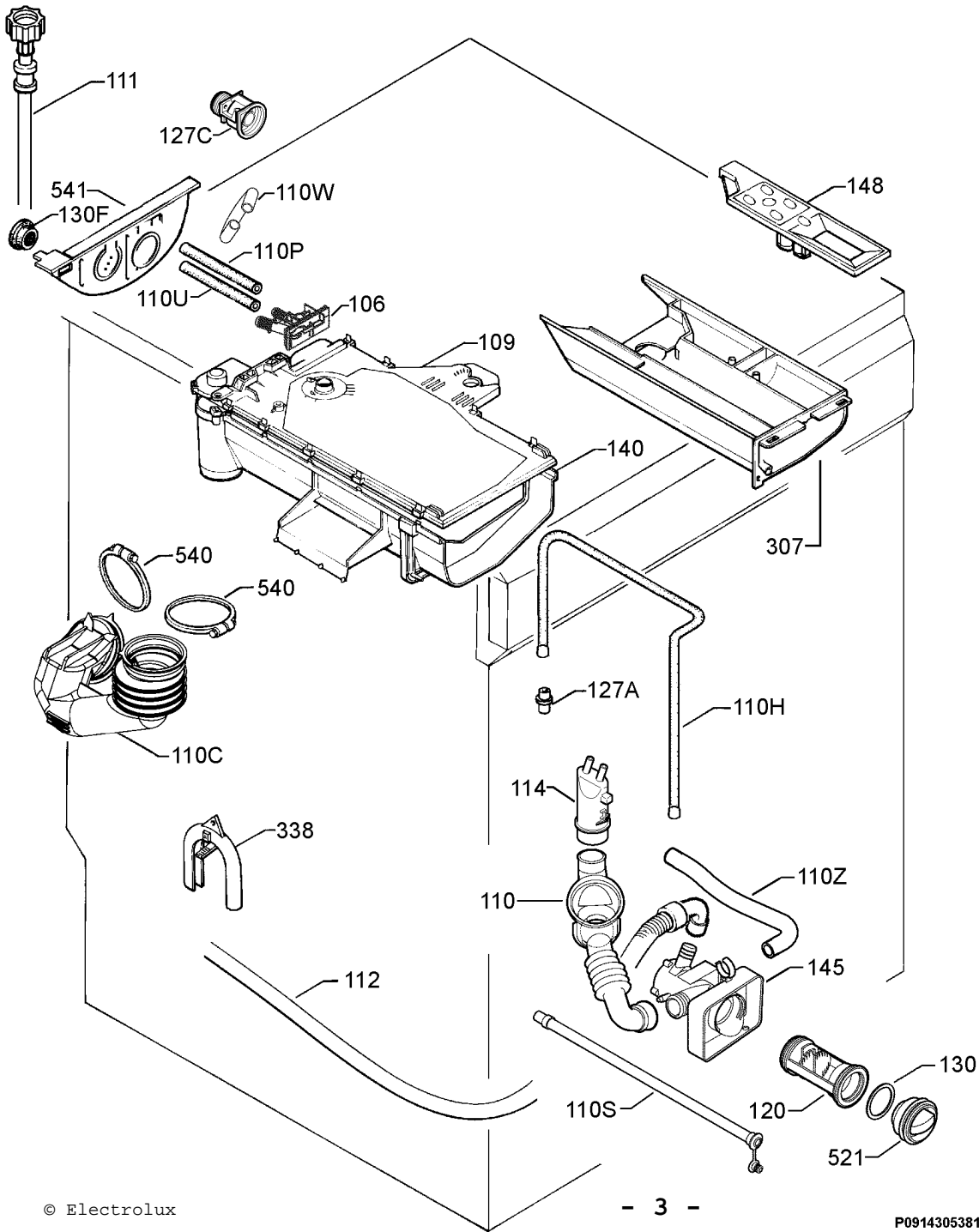
Electrolux Italia S.p.A.
Corso Lino Zanussi 30
I - 33080 Porcia
Italy
Fax +39 (0)434 394096

Publication-No.
599723481
2009/11/17
THR



Matrix	PNC	ELC	ProdDate	Model
A	914900232	00	20091111	EWW1273

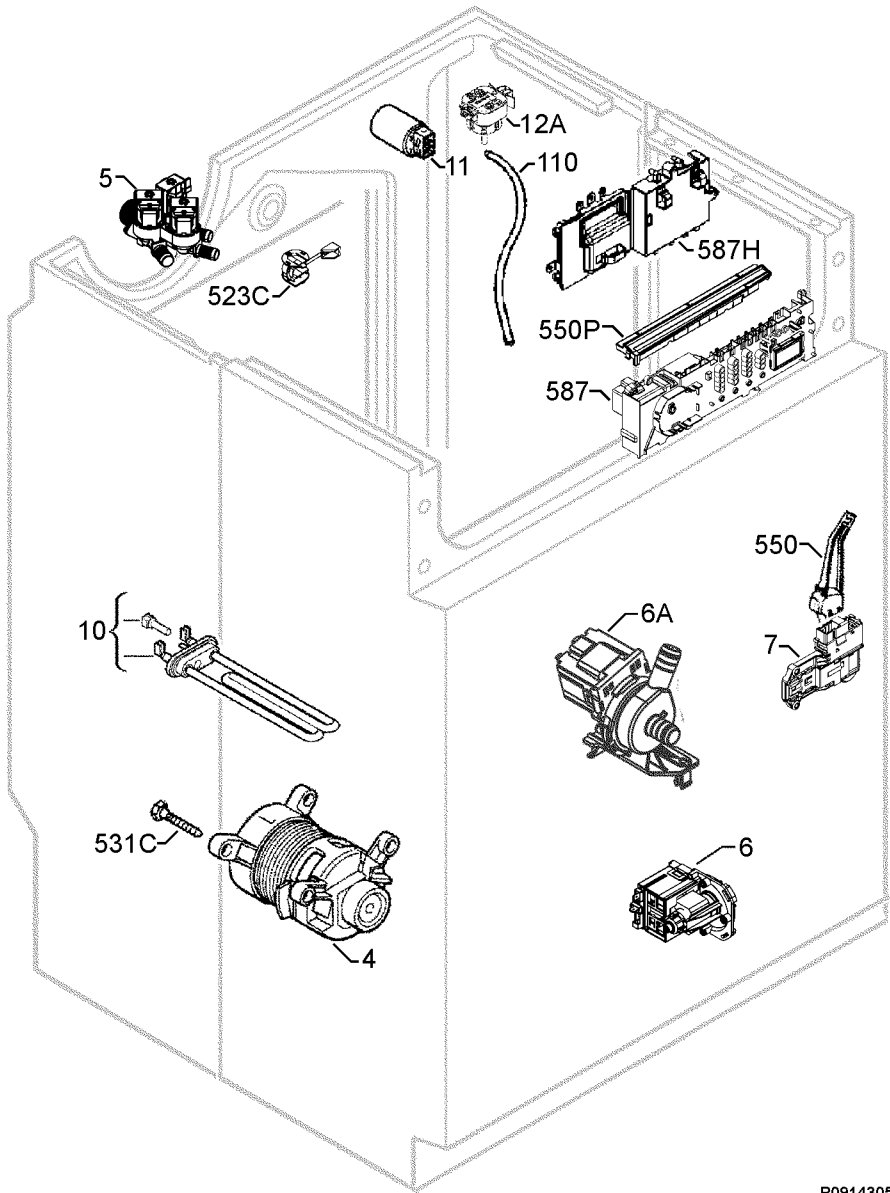
Pos	Part No.	Matrix	Description
013	1320163205	A	Button, safety, porthole, SIGM.3502
130B	1321857003	A	Boss, cabinet, antivibrante
260	1240673135	A	Spring, safety, porthole
260C	1240139129	A	Spring, Catch, BD/NEAT
300	1471833127	A	Cabinet, front
300A	1471019016	A	Cabinet, back
303	1245812449	A	Basement, P62S/RIM
308	1325023107	A	Hinge, porthole, HEC ENV06
310	1321060004	A	Sieve flap, white, RIM
312	1322245000	A	Glass, porthole, RIM
312A	1320191016	A	Canopy, porthole, NEAT A/S
323	1471705002	A	Frame, back, porthole
323A	1472004009	A	Frame, front, porthole
325	1240137214	A	Catch, porthole
330A	1240976058	A	Foot, back, fix
330B	1245264203	A	Assembly, foot, front, 30mm
514	1320026006	A	Hinge bushing
520	1321468009	A	Flange, Catch, porthole
521	1246445009	A	Bung, cabinet, white
523	1471039006	A	Support, hoses, harness
523C	1245320005	A	Bracket, hoses, Back panel
523C	1320727041	A	Tube holder, rear panel, "OV"
523D	1325022000	A	Stiffening, hinge, porthole
530	1471464006	A	Handle, porthole
552	1321673004	A	Support, tube, circulation, RIM EWM2001
563	1240138105	A	Bolt, Catch, porthole, 61mm
563A	1108255009	A	Hinge pin, 101mm
999	1472009503	A	User manual
999	4055033528	A	Screw, bracket, cushion



Exploded view no.: P09143053817
P09143053841

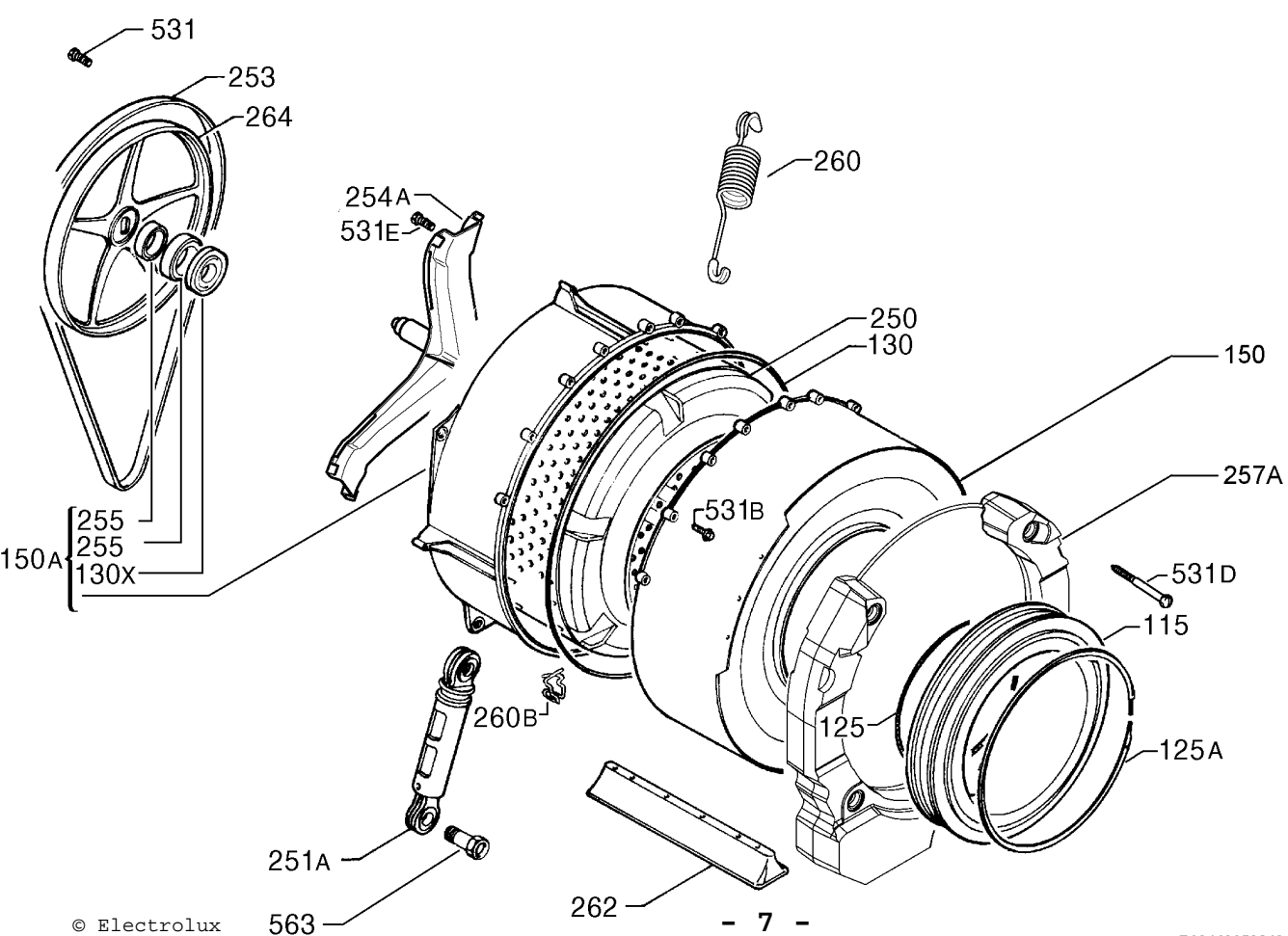
Matrix	PNC	ELC	ProdDate	Model
A	914900232	00	20091111	EWV1273

Pos	Part No.	Matrix	Description
106	1249470103	A	Connector,2-ways,3 SCOMP.
109	1240146280	A	Assembly,conveyor,water
110	1320719105	A	Drain hose,tub,manifold,OKO VALVE
110C	1108504000	A	Inlet hose,water inlet compartment,tub,G21/G22
110H	1246904104	A	Hose,circulation,porthole,WD BD
110P	1472006004	A	Tube,electric valve,D12
110S	1320365040	A	Pipe,water drain,filter,NEAT/OV/RIM
110U	1472007002	A	Tube,electric valve,D10
110W	1240305308	A	Hose set,electric valve,pipe union,WD-RIM
110Z	1321155002	A	Hose,suction,circulation,L=242 D=15
111	1245078454	A	Water tube inlet
112	1240881704	A	Discharge hose,L=2370
114	1243071105	A	Bell,air,1-way
120	1326835012	A	Strainer
127A	1240001006	A	Tube connection,circulation
127C	1240783009	A	Connector,solenoid,AF 3vie
130	1320712001	A	Seal,filter,coarse strainer
130F	1240151009	A	Sealing
140	1471466100	A	Dispenser,detergent
145	1471047009	A	Pump body
148	1246136129	A	Syphon,additives,3 scomparti UK
307	1471713006	A	Drawer,detergent,3-ways
338	1242916003	A	Hose retainer
521	1320711003	A	Handle plug,filter,RIM TRAD.
540	1240060002	A	Hose clamp,D=64
541	1322916006	A	Cable clamp,tube,rear panel
999	1051174801	A	Hose clamp,50,6-53,2 mm



Matrix	PNC	ELC	ProdDate	Model
A	914900232	00	20091111	EWW1273

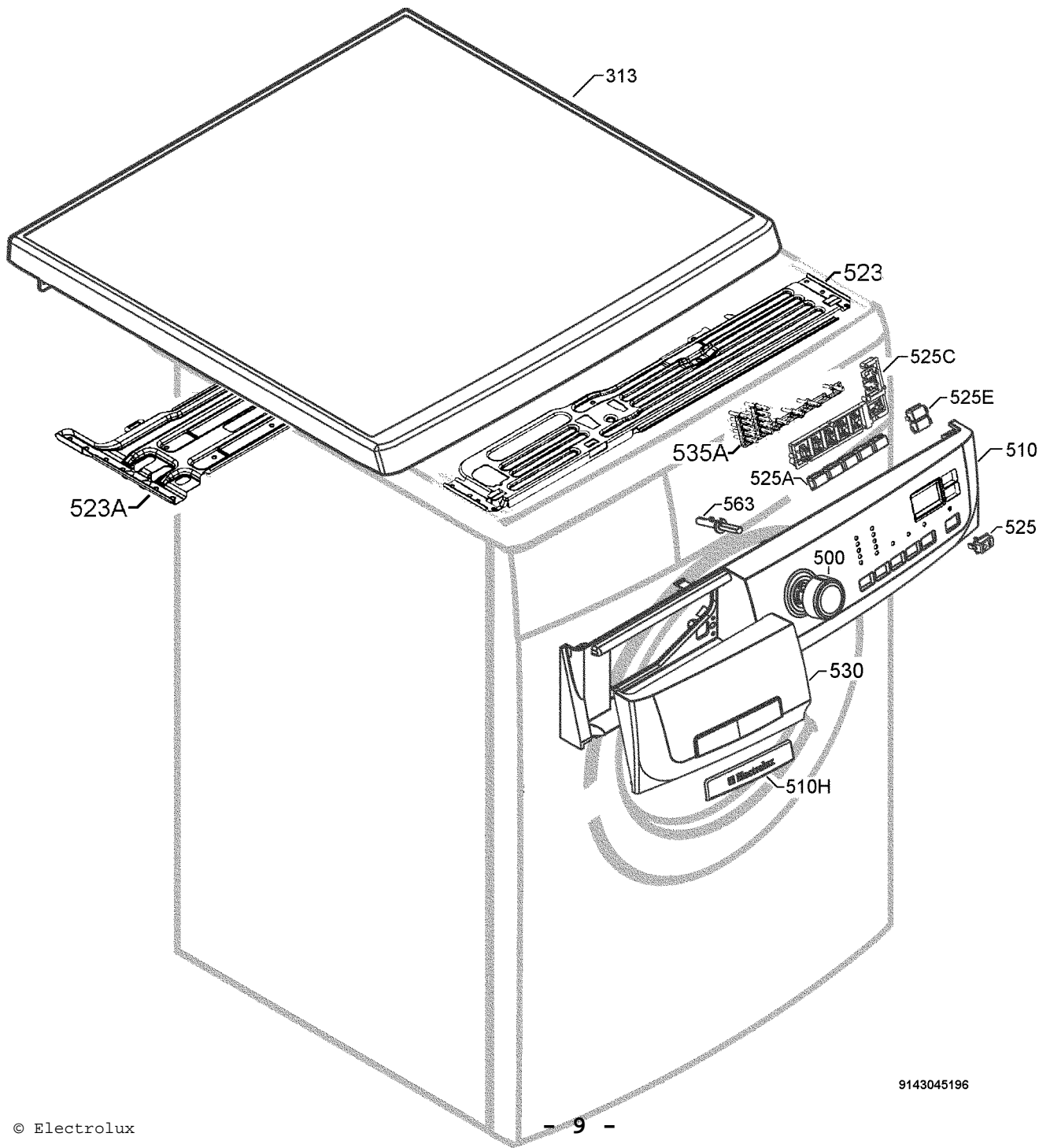
Pos	Part No.	Matrix	Description
004	1324152204	A	Motor,universal
005	1324377009	A	Electric valve,WD ENV06 3VIE
006	1326630009	A	Drain pump,ASKOLL
006A	1321152603	A	Assembly,recirculation pump,ASKOLL NJ
007	1249675149	A	Door lock,IDOLO
010	1325064101	A	Heating element,+NTC 24/19 IRCA
011	1240343622	A	Interference suppressor,10A PROCOND
012A	1324143021	A	Analogic pressure switch
523	1247094004	A	Receptacle,cable,Container cup
523C	1322393115	A	Support,sieve,anti-interference,WD
531C	1240222016	A	Bolt,5,5x38
550	1321444208	A	Protection,door safety interlock
550P	1325093019	A	Protection,connector
587	1471737302	A	Not configured electronic,EWM2100
587H	1324478104	A	Pcb assembly,drying
999	1240834042	A	Hose set,pressure,tub
999	1325222006	A	Harness,earth
999	1471217008	A	Terminal block
999	1471378800	A	Power cable



Exploded view no.: P09143053819
P09143053843

Matrix	PNC	ELC	ProdDate	Model
A	914900232	00	20091111	EWV1273

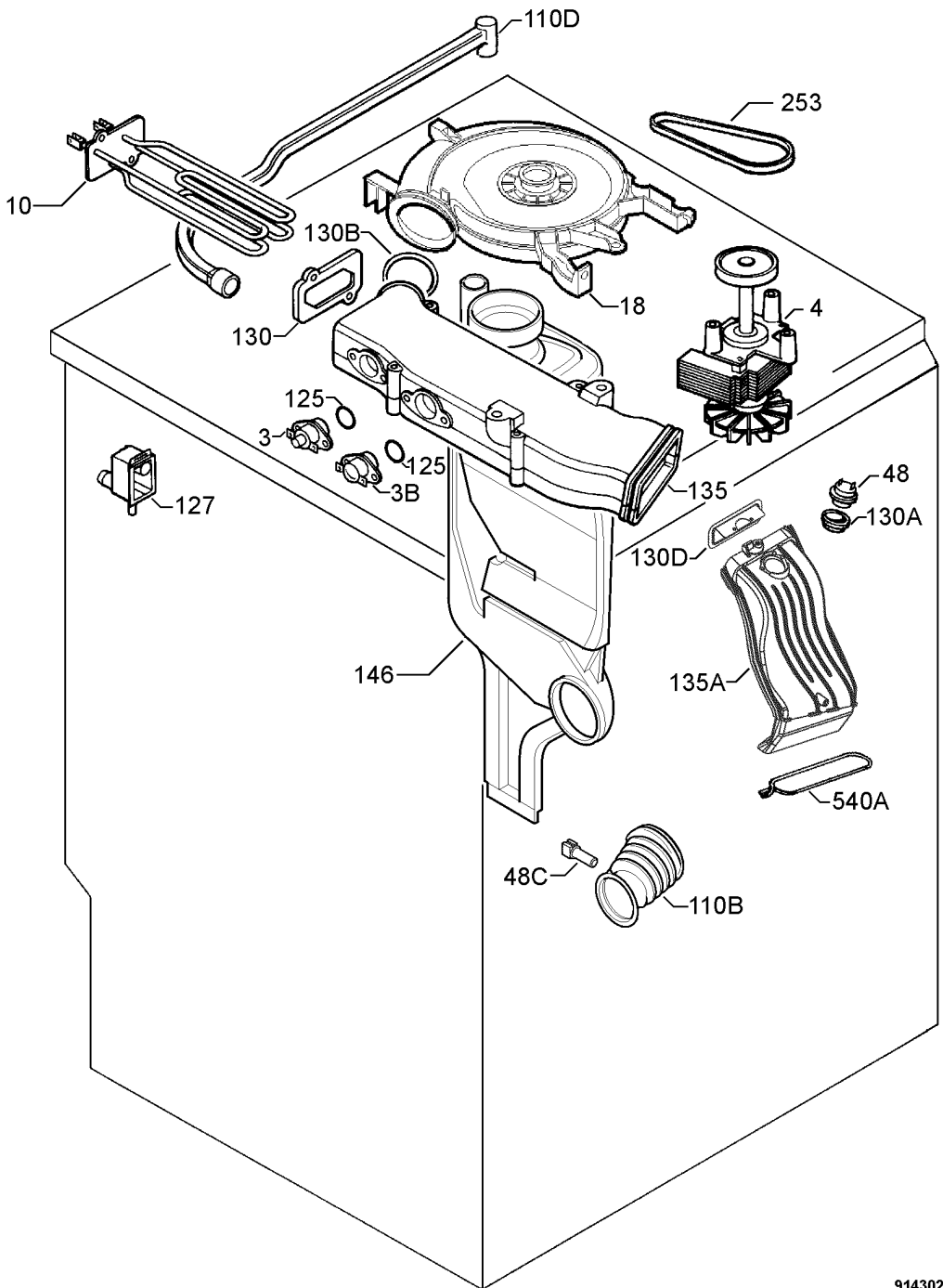
Pos	Part No.	Matrix	Description
115	1323230001	A	Rubber bellow,WD RIM JS
125	1320024001	A	Fixing spring,rubber bellow,tub,BD
125A	1320552001	A	Connection ring,rubber bellow,cabinet,BD
130	1240159036	A	Gasket,shell,tub
130X	1249685007	A	Seal,drum shaft,35-62
150	1249657469	A	Shell,front,tub
150A	1321570101	A	Assembly,shell,back
250	1471683001	A	Assembly,drum
251A	1326240015	A	Cushion
253	1323531309	A	Drive belt,1184J6
254A	1471635001	A	Assembly,Spider,drum
255	3790800209	A	Bearing,30x62x16
255	50269558008	A	Bearing,25x52x15
257A	1322812114	A	Counterweight,front,16,5KG BD
260	1322533108	A	Spring,suspension,tub,ROSSO
260B	1247825100	A	Retaining spring,heater
262	50249701009	A	Kit,drum lifter,screw
264	1108614205	A	Pulley,G22/85
523B	1108593037	A	Hose clamp,pressure switch,tub
531	5191350270	A	Screw,pulley,M10x25 AF TSP
531B	1322290014	A	Screw,shell,tub
531D	1245717010	A	Screw,counterweight,8X59 TSP/TORX
531E	1240220010	A	Screw,bearing spider
563	1240041242	A	Bolt,damper lining
999	1242122115	A	Plain washer,counterweight,front,(21,7x29)
999	1246669129	A	Space compensator,heater element



Exploded view no.: P09143045196
P09143053844

Matrix	PNC	ELC	ProdDate	Model
A	914900232	00	20091111	EWW1273

Pos	Part No.	Matrix	Description
313	1325179206	A	Work top,ENV06
500	1471845204	A	Knob,selector,economy programme
510	1471997005	A	Control panel,silkscreened
510H	1471756005	A	Insert,handle
523	1325457032	A	Controls support
523A	1471282002	A	Controls support
525	1471823102	A	Push button,start,pause
525A	1471842201	A	Push button,function
525C	1325091005	A	Support,Push button,TC2/3/4/5/6
525E	1471847002	A	Push button,option
530	1471999100	A	Handle,Drawer
535A	1325090528	A	Diffuser,luminous diode
563	1321096016	A	Pin,Programme selector,EWM1000

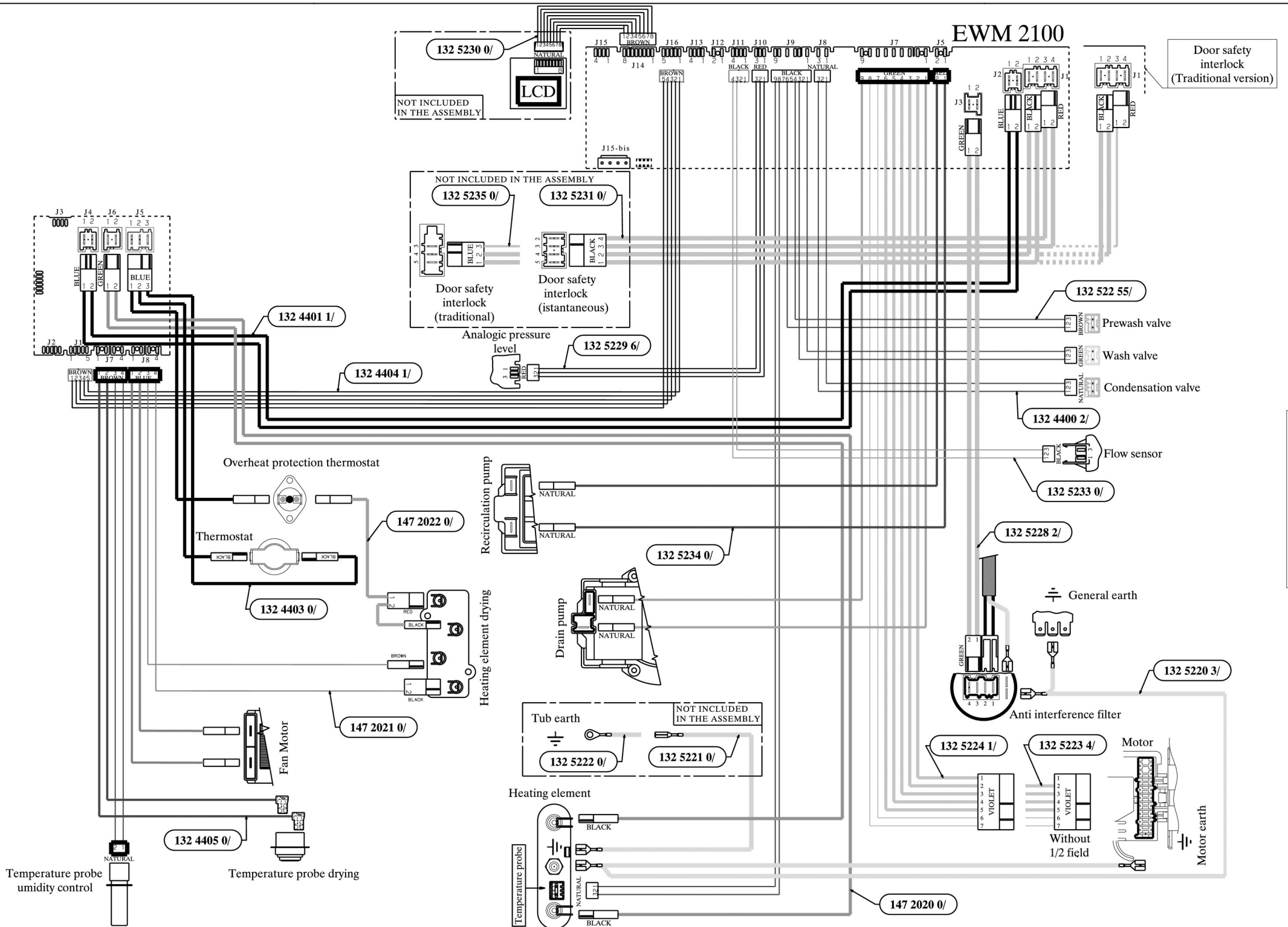


Exploded view no.: P09143029637
P09143053845

Matrix	PNC	ELC	ProdDate	Model
A	914900232	00	20091111	EWW1273

Pos	Part No.	Matrix	Description
003	1242702007	A	Temperature regulator,manual reset,150c
003B	1242726501	A	Temperature regulator,110/94 ELTH
004	1321140012	A	Fan motor
010	1242658936	A	Heating element
018	1323244028	A	Assembly,ventilator
048	1246641037	A	Temperature probe
048C	1242941100	A	Probe,NTC
110B	1321066126	A	Connecting sleeve,condenser,tub
110D	1321032102	A	Vent hose,Steam condenser
125	50241410005	A	O-ring,temperature regulator
127	1247093022	A	Air break,WD/MED.
130	1242636049	A	Sealing sleeve,heater element,Channel drainage
130A	1240884021	A	Gasket,temperature regulator,feeler
130B	1242662003	A	Sealing sleeve,Duct,Case
130D	1323242014	A	Protection,assembly,Channel drainage
135	1321073049	A	Assembly,container,heater element
135A	1323241008	A	Assembly,Channel drainage
146	1321033076	A	Assembly,Steam condenser,vertical
253	1240827426	A	Drive belt,ventilator,WD BD
540A	1242729109	A	Fixing clamp,Duct,rubber bellow

EWM 2100



WIRING HARNESS

UPDATING ALARM TABLE ENV06 (Rev. 02)

- ↪ In the previous tables, the alarm initials were all indicated with capital letters, while the display of the appliance shows both capital and small letters.
- ↪ The alarm initials in this table are indicated as they appear in the display.
- ↪ In the alarm list was wrongly written **E5b**, while the display shows **E5H**.
- ↪ Depending on the software installed in the PCBs, some appliances show **E9b** some others **E9H** (the displaying changes, but the alarm is the same).
- ↪ In the previous platforms some alarms were displayed with the initials:

Eb+(number/letter)

with possible misinterpretation of the letter **b** with the number **six**.

To avoid this problem, in this platform the letter **b** has been replaced with letter **H**.

Alarm	Possible fault	Action/machine status	Reset	Alarm
E00	Nessun allarme	-----	-----	-----
E11	Difficulties in water fill for washing	Tap closed or water pressure too low; Drain tube improperly positioned; Water fill solenoid valve is faulty; Leaks from water circuit on pressure switch; Pressure switch faulty; Wiring faulty; PCB faulty.	Cycle is paused with door locked.	START/RESET
E12	Difficulties in water fill for drying	Tap closed or water pressure too low; Drain tube improperly positioned; Water fill solenoid valve is faulty; Leaks from water circuit on pressure switch; Pressure switch faulty; Wiring faulty; PCB faulty.	Cycle is paused with door locked.	START/RESET
E13	Water leakage	Drain hose incorrectly positioned; mains pressure insufficient; water fill solenoid faulty; leakage/blockage of pressure switch hydraulic circuit; pressure switch faulty.	Cycle is paused with door locked.	START/RESET
E21	Difficulties in draining for washing	Drain tube kinked/clogged/improperly positioned; Drain filter clogged/dirty; Drain pump faulty; Pressure switch faulty; Wiring faulty; PCB faulty.	Cycle is paused (after 2 attempts).	START/RESET
E22	Difficulties in draining for drying	Drain tube kinked/clogged/improperly positioned; Drain filter clogged/dirty; Drain pump faulty; Pressure switch faulty; Wiring faulty; PCB faulty.	Cycle is paused.	START/RESET
E23	Drain pump triac faulty	Drain pump faulty; Wiring faulty; PCB faulty.	Safety drain cycle - Cycle stops with door unlocked.	RESET
E24	Fault in "sensing" circuit of drain pump triac (wrong input signal to microprocessor)	PCB faulty.	Safety drain cycle - Cycle stops with door unlocked.	RESET
E31	Electronic pressure switch circuit faulty (frequency of pressure switch signal out of limits)	Electronic pressure switch; Wiring; PCB faulty.	Cycle blocked with door closed.	RESET
E32	Incorrect calibration of electronic pressure switch (The electronic pressure switch generates a signal with instable frequency during the drain phase)	Drain tube kinked/clogged/improperly positioned; Drain filter clogged/dirty; Drain pump faulty; Leaks from water circuit on pressure switch; Pressure switch; Wiring faulty; PCB faulty.	Cycle is paused.	START/RESET
E35	Water overflow	Water fill solenoid faulty; Leaks from water circuit on pressure switch; pressure switch faulty; wiring faulty; PCB faulty.	Cycle blocked. Safety drain cycle. Drain pump always in operation (5 minutes on, 5 minutes off etc.).	RESET
E38	Pressure chamber blocked (water level does not vary for at least 30 sec. during drum rotation)	Motor drive belt broken; Hydraulic circuit pressure switch clogged.	Heating phase skipped.	ON/OFF RESET
E3A	Heating elem. relay sensing faulty (input signal to microprocessor always 0V or 5V)	PCB faulty.	Cycle blocked with door closed.	RESET
E41	Door open (after 15 sec.)	Door interlock faulty; wiring faulty; PCB faulty.	Cycle paused.	START/RESET
E42	Problems of door closure	Door interlock faulty; wiring faulty; PCB faulty.	Cycle paused.	START/RESET
E43	Interlock power supply triac faulty	Door interlock faulty; wiring faulty; PCB faulty.	(Safety drain cycle) Cycle blocked.	ON/OFF RESET

Alarm	Possible fault	Action/machine status	Reset	Alarm
E44	Door interlock sensing circuit triac faulty	PCB faulty.	(Safety drain cycle) Cycle blocked.	ON/OFF RESET
E45	Door interlock sensing circuit triac faulty (wrong input signal to microprocessor)	PCB faulty.	(Safety drain cycle) Cycle blocked.	ON/OFF RESET
E51	Motor power supply triac short-circuited	PCB faulty; current leakage from motor or from wiring.	Cycle blocked, door locked (after 5 attempts).	RESET
E52	No signal from motor tachometric generator	Motor faulty; wiring faulty; PCB faulty.	Cycle blocked, door locked (after 5 attempts).	RESET
E53	Motor triac sensing circuit faulty (input signal to microprocessor wrong)	PCB faulty.	Cycle blocked, door locked.	RESET
E54	Motor relay contacts sticking (high voltage level when the relay changes to OFF)	PCB faulty; current leakage from motor or from wiring.	Cycle blocked, door locked (after 5 attempts).	RESET
E57	Inverter is drawing too much current (>15A)	Motor-Inverter wiring faulty; Inverter board faulty, Motor faulty.	Cycle blocked, door locked (after 5 attempts).	RESET
E58	Inverter is drawing too much current (>4,5A)	Motor abnormal operation (overloaded); Motor-Inverter wiring faulty; Motor faulty; Inverter board faulty.	Cycle blocked, door locked (after 5 attempts).	RESET
E59	No signal for tachometric generator for three seconds	Motor-Inverter wiring faulty; Inverter board faulty, Motor faulty.	Cycle blocked, door locked (after 5 attempts).	RESET
E5A	Overheating for heat dissipator for Inverter	Overheating caused by continuous operation or ambient conditions (let appliance cool down); Inverter board faulty. NTC open (on the Inverter board).	Cycle blocked, door locked (after 5 attempts).	RESET
E5H	Input voltage is lower than 175V	Wiring faulty; Inverter board faulty.	Cycle blocked, door locked (after 5 attempts).	RESET
E5C	Input voltage is too high	Input voltage is too high (measure the masters voltage); Inverter board faulty.	Cycle blocked, door locked (after 5 attempts).	RESET
E5d	Data transfer error between Inverter and main board	Line interference; Wiring faulty; Main board or Inverter faulty.	-----	RESET
E5E	Wrong communication between main board and Inverter	Main board-Inverter wiring faulty; Inverter board faulty; Main board faulty.	Cycle blocked (after 5 attempts).	ON/OFF
E5F	Inverter board does not start the motor	Wiring faulty; Inverter board faulty; Main board faulty.	Cycle blocked, door locked (after 5 attempts).	RESET
E61	Insufficient heating during washing	NTC sensor faulty; heating element faulty; wiring faulty; PCB faulty.	The heating phase is skipped.	START/RESET
E62	Overheating during washing (temperature higher than 88°C for a time higher than 5 min.)	NTC sensor faulty; heating element faulty; wiring faulty; PCB faulty.	Safety drain cycle – Cycle stopped with door open.	RESET
E66	Heating element power relay faulty (incongruence between sensing and relay)	PCB faulty.	Safety drain cycle – Cycle stopped with door open.	RESET

Alarm	Possible fault	Action/machine status	Reset	Alarm
E68	Current dispersion to earth (value of mains voltage different from main value)	Current dispersion between between heating element and earth.	Cycle blocked with door open.	RESET
E69	Heating element interrupted	Wiring faulty; Heating element for washing interrupted (thermofuse open).	-----	START/RESET
E71	Washing NTC sensor faulty (short-circuited or open)	Wiring faulty; Washing NTC sensor faulty; PCB faulty.	The heating phase is skipped.	START/RESET
E72	Drying condenser NTC sensor faulty (voltage value out of limits, sensor short-circuited or open)	Wiring faulty; Drying NTC sensor (condenser) badly positioned or faulty; WD board faulty.	The drying heating phase is skipped.	START/RESET
E73	Drying duct NTC sensor faulty (voltage value out of limits, sensor short-circuited or open)	Wiring faulty; Drying NTC sensor (duct) badly positioned or faulty; WD board faulty.	The drying heating phase is skipped.	START/RESET
E74	Washing NTC sensor badly positioned	Wiring faulty; Washing NTC sensor badly positioned; NTC sensor faulty; PCB faulty.	The heating phase is skipped.	START/RESET
E82	Error in selector reset position	PCB faulty (Wrong configuration data).	-----	RESET
E83	Error in selector reading	PCB faulty (Wrong configuration data).	Cycle cancelled.	START/RESET
E91	Communication error between PCB and display board	Wiring faulty; Control/display board faulty; PCB faulty.	-----	RESET
E92	Communication incongruence between main PCB- display board (versions not compatible)	Wrong control/display board; Wrong PCB (do not correspond to the model).	Cycle interrupted.	OFF/ON
E93	Incorrect configuration of appliance	PCB faulty; (Incorrect configuration data).	Cycle interrupted.	OFF/ON
E94	Incorrect configuration of washing cycle	PCB faulty; (Incorrect configuration data).	Cycle interrupted.	OFF/ON
E95	Communication error between microprocessor and EEPROM	PCB faulty.	Cycle interrupted.	RESET
E97	Incongruence between programme selector and cycle configuration	Faulty PCB (Wrong configuration data).	Cycle interrupted.	RESET
E98	Communication error between main board - Inverter	Incompatibility between main board and Inverter.	Cycle interrupted.	OFF/ON
E9b/E9H	Communication error between microprocessor and FLASH memory	Display board.	-----	OFF/ON RESET
E9C	Machine configuration error	Display board.	-----	OFF/ON RESET
E9d	Clock faulty	Display board.	-----	OFF/ON RESET
E9F	Communication error between PCB and remote devices	Wiring between PCB and Inverter faulty; PCB faulty; Inverter faulty.	Cycle interrupted.	OFF/ON
EC1	Solenoid valve blocked with flowmeter working	Wiring faulty; Solenoid valve faulty/blocked, PCB faulty.	Cycle blocked with door closed. Drain pump always works (5 min., then it stops for 5 min. ecc.).	RESET

Alarm	Possible fault	Action/machine status	Reset	Alarm
EC3	Problems with Weight sensor (no signal or out of limits)	Wiring faulty; Weight sensor faulty; PCB faulty.	-----	START/RESET
Ed1	Data communication error between WD board and PCB	Wiring faulty between PCB and WD board; WD board faulty; PCB faulty.	Cycle interrupted.	OFF/ON
Ed2	Drying heating element relay 1 faulty	Wiring faulty between WD board and thermostats; thermostats faulty; WD board faulty, PCB faulty.	Cycle blocked with door open.	RESET
Ed3	Drying heating element relay 2 faulty	Wiring faulty between WD board and thermostats; thermostats faulty; WD board faulty, PCB faulty.	Cycle blocked with door open.	RESET
Ed4	Relay which commutates power between washing heating element and drying (in the WD board)	Wiring faulty; WD board faulty; PCB faulty.	Cycle blocked with door open.	RESET
Ed6	No communication between PCB and display board (INPUT)	Wiring faulty between PCB and programme display board; PCB faulty.	-----	OFF/ON
EF1	Drain filter blocked (drain phase too long)	Drain tube blocked/kinked/too high; Drain filter dirty/blocked.	Warning displayed at the end of cycle (specific LED).	START/RESET
EF2	Excessive detergent dosing (excessive foam during draining)	Excessive detergent dosing; drain tube kinked/blocked; Drain filter dirty/blocked.	Warning displayed after 5 attempts or by the specific LED.	RESET
EF3	Aqua control intervention	Water leaks onto base frame; water control system defective.	Water drain.	ON/OFF RESET
EF4	Water fill pressure low, no signal of flowmeter and solenoid valve open	Tap closed; water fill pressure low.	-----	RESET
EF5	Unbalanced load	Final spin phases skipped.	-----	RESET
EF6	Reset	-----	No action to be performed, if continues replace the PCB.	-----
EH1	Frequency power of appliance out of limits	Power supply problems (incorrect / disturbance); PCB faulty.	Wait for frequency nominal conditions.	OFF/ON
EH2	Voltage too high	Power supply problems (incorrect / disturbance); PCB faulty.	Wait for frequency nominal conditions.	OFF/ON
EH3	Voltage too low	Power supply problems (incorrect / disturbance); PCB faulty.	Wait for frequency nominal conditions.	OFF/ON
EHE	Incongruence between safety relay (in the PCB) and the safety "sensing" circuit	Wiring faulty; PCB faulty.	Safety drain cycle – Cycle stopped with door open.	RESET
EHF	Safety "sensing" circuit faulty (input voltage to microprocessor wrong)	PCB faulty.	Safety drain cycle – Cycle stopped with door open.	RESET

REVISION	DATE	DESCRIPTION
01	07/2008	Table update
02	03/2009	Modification of alarms E21-E22