



ELECTROLUX HOME PRODUCTS PTY LTD
ABN 51 004 762 341

Technical Publication No. DR126

Issue : Prelim

Date: 09/2009

WEB SITE ADDRESS: www.partship.com.au

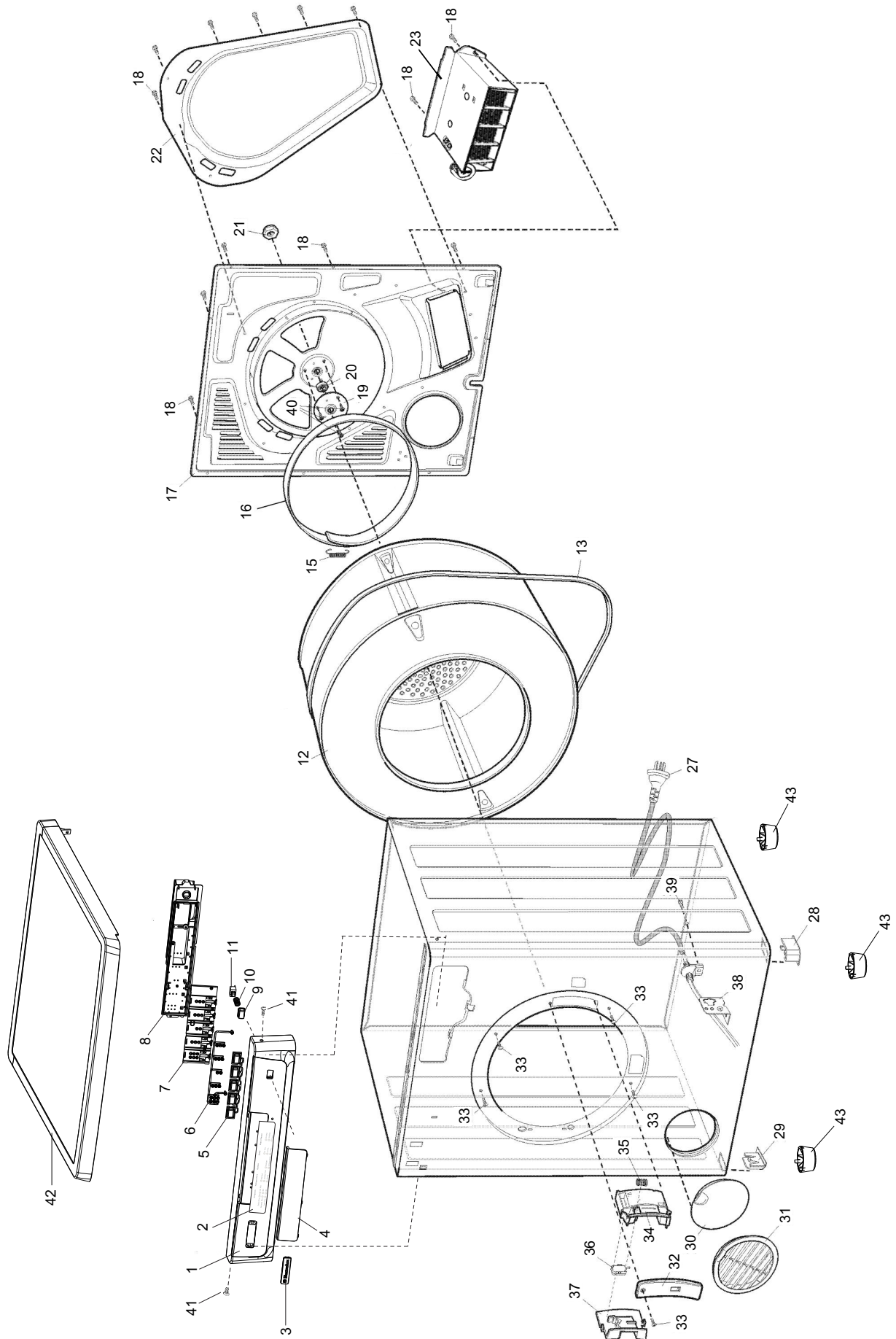
ELECTROLUX

TUMBLE DRYERS

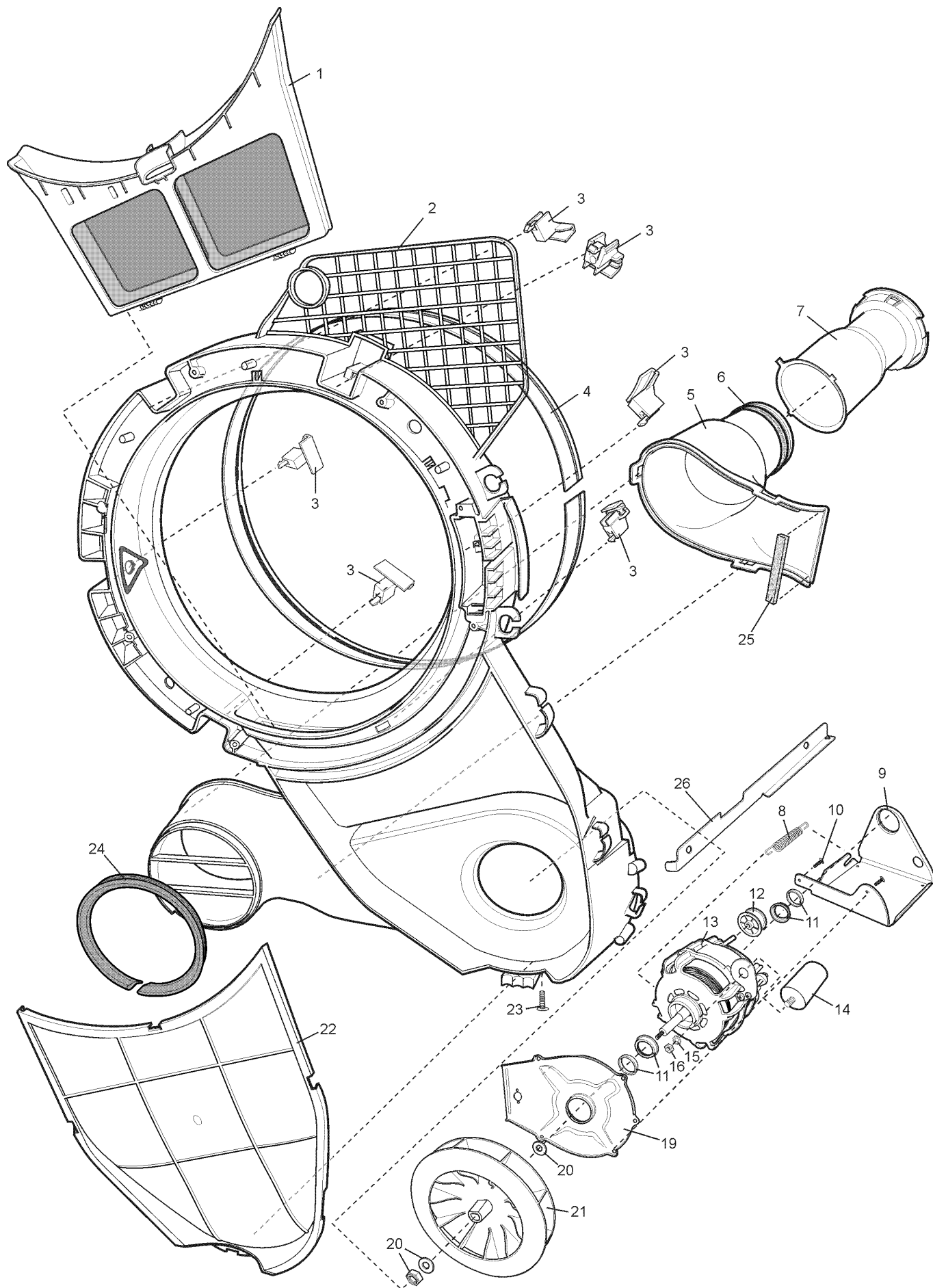
SECTION	PAGE N°
GENERAL ASSEMBLY	2 & 3
HOUSING ASSEMBLY	4 & 5
DOOR ASSEMBLY	6
SPECIFICATIONS	7
SAFETY NOTICE	8
CONTROLS DESCRIPTION	9
PROGRAMS DESCRIPTION	11
FAULT MESSAGES	13
MAINTENANCE MODE	13
WIRING DIAGRAM	15

MODELS:

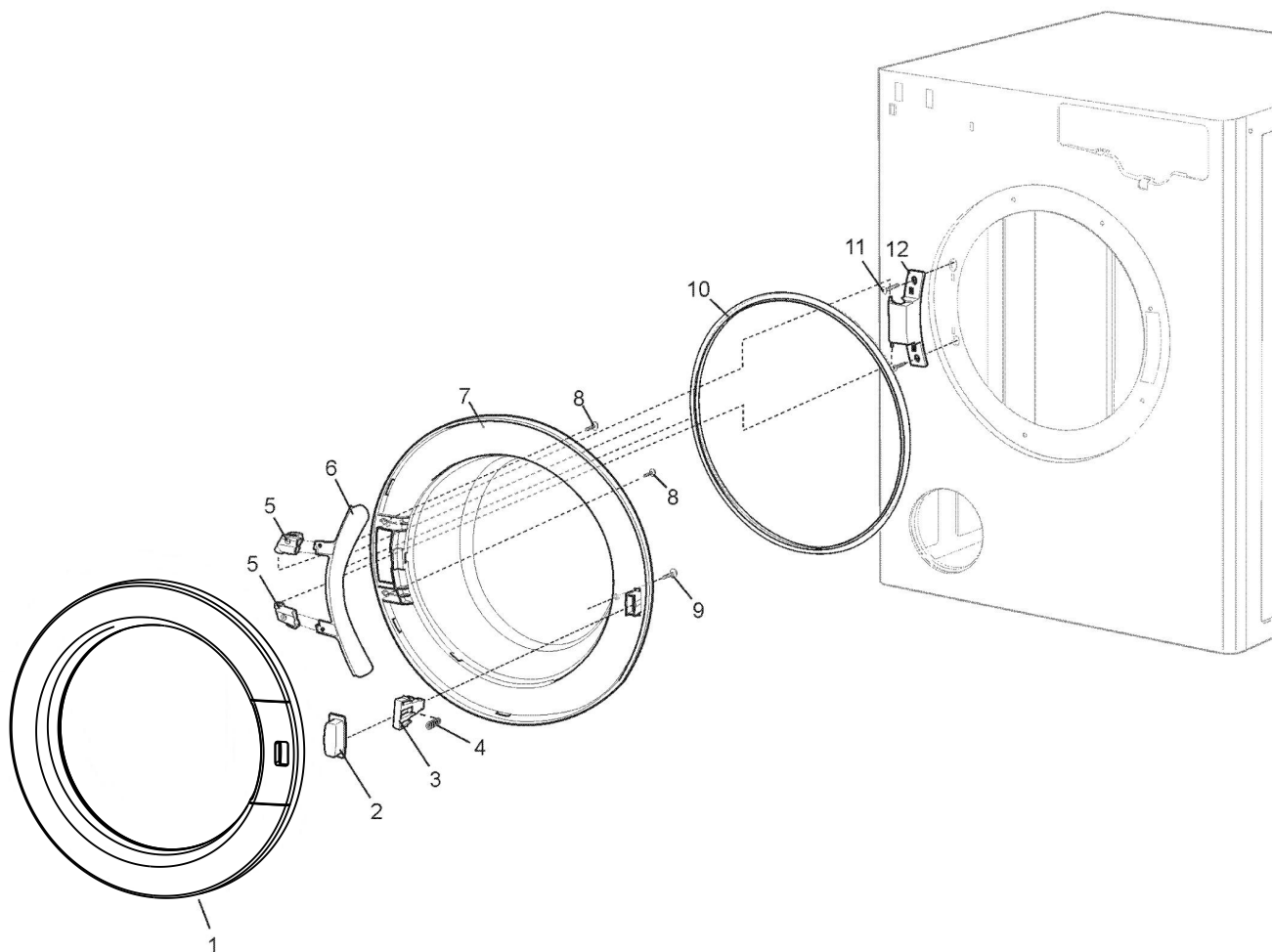
EDV605 UK PNC : 916002029	EDV705 EU PNC : 916002032	EDV705G EU PNC : 916002034
EDV605 TH PNC : 916002030	EDV705 UK PNC : 916002037	EDV705G UK PNC : 916002035
	EDV705 TH PNC : 916002038	EDV705G TH PNC : 916002036



ITEM	PART No.	DESCRIPTION	605	705	705G
1	133603200	TRIM PANEL DECORATED - EDV605	1		
	133604000	TRIM PANEL DECORATED - EDV705		1	
	133604010	TRIM PANEL DECORATED - EDV705G			1
2	133266900	TRIM INSERT WHITE	1	1	
	133266910	TRIM INSERT ARTIC GREY			1
3	133380500	BADGE NAME PLATE E/LUX	1	1	1
4	133268000	COVER TRIM INSERT WINDOW	1	1	1
5	133380000	PUSH BUTTON PROGRAM SELECTION	1	1	1
6	133265900	LIGHTPIPE - E/LUX (ETOSHA)	1	1	1
7	133266800	TRIM INSERT SUPPORT-ETOSHA	1	1	1
8	133406500	CONTROL ASSY ELEC - ETOSHA	1	1	1
9	133380200	BUTTON ON/OFF (ETOSHA)	1	1	1
10	133145400	SPRING ON/OFF BUTTON	1	1	1
11	133030200	SWITCH POWER ON/OFF	1	1	1
12	133404110	DRUM ASSY 6KG SS	1	1	1
13	133330200	BELT DRUM DRIVE-CPD (7 RIB)	1	1	1
15	133145600	SPRING DRUM SEAL	1	1	1
16	133220800	SEAL DRUM REAR	1	1	1
17	133137900	PANEL BACK-CPD	1	1	1
18	133123100	SCREW NO.8X3/8 HEX WASHER HD	29	29	29
19	133138200	BEARING COVER	1	1	1
20	133100000	BEARING 608ZZC4/10MM-ETK 50%	1	1	1
21	133120900	NUT M8 22441-518	1	1	1
22	133135800	COVER PANEL BACK	1	1	1
	133135900	COVER PANEL OUTER	1	1	1
23	133417000	BRACKET & HEATER ASSY	1	1	1
27	133005200	CABLE SERVICE CORD - EDV705 EU / EDV705G EU		1	1
	133005300	CABLE SERVICE CORD - EDV605 UK / EDV705 UK / EDV705G UK	1	1	1
	133005400	CABLE SERVICE CORD - EDV605 TH / EDV705 TH / EDV705G TH	1	1	1
28	133260300	PLUG CORNER RIGHT - WHITE	1	1	
	133260310	PLUG CORNER RIGHT - ARCTIC GREY			1
29	133260200	PLUG CORNER LEFT - WHITE	1	1	
	133260210	PLUG CORNER LEFT - ARCTIC GREY			1
30	133376300	COVER EXHAUST END CAP - WHITE	1	1	
	133376310	COVER EXHAUST END CAP - ARCTIC GREY			1
31	133377600	GRILLE EXHAUST OUTLET - WHITE	1	1	
	133377610	GRILLE EXHAUST OUTLET - ARCTIC GREY			1
32	133376100	COVER DOOR SWITCH BRACKET	1	1	
	133376110	COVER DOOR SWITCH BRACKET - ARCTIC GREY			1
33	133123700	SCREW M4X1.75X14 PLASTITE HE	5	5	5
34	133280200	BRACKET DOOR SWITCH CPD	1	1	1
35	133145500	SPRING STRIKER DOOR SWITCH	1	1	1
36	133025200	SWITCH MICRO DOOR	1	1	1
37	133260800	STRIKER DOOR SWITCH	1	1	1
38	133137300	BRACKET HARNESS RETAINER	1	1	1
39	133123600	SCREW NO.8X10 21479-212	1	1	1
40	119122400	SCREW HWH NO.10-16 ABX1/2'	3	3	3
41	133122900	SCREW 6-18*10 WSH HD	2	2	2
42	133423000	WORK TOP ASSY E/LUX - WHITE	1	1	
	133423010	WORK TOP ASSY E/LUX - ARCTIC GREY			1
43	133245400	LEGS LEVELING	4	4	
	133245400	LEGS LEVELING - ARCTIC GREY			4
N.I.	133010300	WIRE HARNESS CPD ELECTRONIC	1	1	1
N.I.	133276200	SPACER	2	2	2
N.I.	133137000	BRACKET WALL MOUNTING L/HAND	1	1	1
N.I.	133137100	BRACKET WALL MOUNTING R/HAND	1	1	1
N.I.	133356500	INSTRUCTION WALL BRACKET	1	1	1



ITEM	PART No.	DESCRIPTIONS	605	705	705G
1	133403500	FILTER ASSY CPD	1	1	1
2	133403100	HOUSING BLOWER&COVER ASSY	1	1	
	133403110	HOUSING BLOWER&COVER ASSY			1
3	133255100	BEARING PAD-CPD	4	4	4
	133255200	BEARING FACE - HIGH LOAD	3	3	3
	133260600	BEARING BASE - HIGH LOAD	3	3	3
4	133220300	SEAL DRUM FRONT	1	1	1
5	133275500	COVER HOUSING DUCT	1	1	1
6	133220500	SEAL COVER HOUSING DUCT LARGE	1	1	1
7	133276300	DUCT EXTENSION	1	1	1
8	133145200	SPRING IDLER TENSION	1	1	1
9	133136800	BRACKET MOTOR SUPT REAR CPD	1	1	1
10	133123800	SCREW M4X1.75X14 PLASTITE HE	5	5	5
11	133408000	RING ASSEMBLY	2	2	2
12	133404300	PULLEY IDLER ASSY CPD	1	1	1
13	133040500	MOTOR 2 POLE CPD	1	1	1
14	133015100	CAPACITOR CPD 8uF	1	1	1
15	133122000	WASHER, 8 mm EXT SHAKE PROOF	1	1	1
16	133121200	NUT,M8 HEX	1	1	1
19	133135100	PLATE MOTOR MTG-CPD	1	1	1
20	133121800	WASHER 1/4X15.88X2	1	1	1
	133121900	WASHER SPRING M6	1	1	1
	133121000	NUT M6	1	1	1
21	133275100	FAN(CPD)	1	1	1
22	133275400	COVER HOUSING BLOWER	1	1	1
23	133123700	SCREW M4X1.75X14 PLASTITE PA	1	1	1
24	133395200	SEAL BLOWER HOUSING	1	1	1
25	133220700	SEAL COVER HOUSING DUCT SMALL	1	1	1
26	133137400	BRACKET BASE STIFFENER	1	1	1



ITEMS	PART NO.	DESCRIPTION	605	705	705G
1	133376600	COVER DOOR E/LUX CPD	1		
	133376610	COVER DOOR E/LUX CPD - SILVER		1	1
2	133380100	BUTTON DOOR E/LUX	1		
	133380110	BUTTON DOOR E/LUX - SILVER		1	1
3	133270500	STRIKER DOOR	1	1	1
4	133145300	SPRING LATCH DOOR	1	1	1
5	133260100	HINGE PLATE BEARING	2	2	2
6	133105100	BRACKET DOOR HINGE BRACE	1	1	1
7	133265110	DOOR WINDOW(POLAR MINT)	1	1	1
8	133124000	SCREW M4X18 TAPTITE 2000	2	2	2
9	133123700	SCREW M4X1.75X14 PLASTITE PA	1	1	1
10	133395300	SEAL DOOR EXTRUDED	1	1	1
11	133123900	SCREW M4X1.75X20 PLASTITE PA	2	2	2
12	133105200	HINGE-DIE CAST	1	1	1

SPECIFICATION

POWER SUPPLY	220-240 V~, 50 Hz, 10 A.
HEATER TOTAL RED TO BLACK WIRE WHITE TO BLACK WIRE	DUAL ELEMENT 2100W 750W - 68Ω (APPROX) 1350W - 38Ω (APPROX)
PROGRAMS SENSOR MANUAL TEMPERATURE SETTINGS OPTIONS	PUSH BUTTON SELECTION EXTRA DRY, NORMAL DRY & IRON DRY 90 MIN, 60 MIN & 30 MIN NORMAL, DELICATES & AIRING BUZZER (END OF PROGRAM ONLY) & CREASE FREE
MOTOR RED TO WHITE WIRE BLUE TO WHITE WIRE RED TO BLUE WIRE LOCKED ROTOR CURRENT CAPACITOR	PSC REVERSING WITH A SELF RESETTING OVERLOAD 29Ω (APPROX) 30Ω (APPROX) 59Ω (APPROX) 2 AMP (APPROX) 8μF
TEMPERATURE CONTROL EXHAUST SENSOR THERMAL CUTOUT SAFETY	NTC THERMISTOR-LOCATED ON THE MOTOR MOUNTING PLATE OPENS 92°C - PART OF THE HEATER ASSY ONE SHOT FUSIBLE 170°C - PART OF THE HEATER ASSY
DRYING CAPACITY (TO ASNZS 2442.1)	EDV605 - 6 Kg EDV705 - 7 Kg EDV705G - 7 Kg
ENERGY LABEL RATING	N/A
DIMENSIONS EDV606E	800 mm (H) x 602 mm (W) x 598 mm (D)
ACCESSORIES	DRYER VENTING KIT P/No.: 133410200



SAFETY FIRST

ALL PARTS OF THE CONTROL BOARD ARE AT 240 VOLT POTENTIAL TO EARTH WHEN THE CONTROLLER HAS POWER TO IT.

DUTY OF CARE

Under the "**Duty of Care**" obligation all appliances must be checked to ensure they are Electrically and Mechanically safe.

Insulation and Earth Continuity Testing should be performed before and after performing service and adjustments on any product. Use a **reliable** and **tested** insulation tester (Megger) for these procedures.

EARTH CONTINUITY TEST.

Set the testing meter to a "**Low Ohms**" scale and zero the meter.

Test between the earth pin on the power cord and the appliance frame to ensure continuity of the earth circuit. (Reading should be less than **1 Ohm**).

INSULATION TEST

Set the testing meter to the **500 volts D.C.** scale.

Bridge out the **ACTIVE** and **NEUTRAL** Pins on the appliance power cord.

Test between the **ACTIVE/NEUTRAL** bridge and the **EARTH** pin on the power cord, the resistance is to be above **1 Meg-Ohm**.

Caution: Do not apply this test unless the Active and Neutral pins have been bridged, as damage to electronic components may occur.

Any product that fails either of the electrical tests should be made in-operable, a "**Must Not Operate**" tag fitted and the customer advised the reasons for that action. In the case of a power point (GPO) that lacks correct earthing or the polarity is incorrect the customer should be advised to have an Electrician correct it before using that power point (GPO).



CONTROL DESCRIPTION

1. Start/Pause Button

Used to start and pause programs. Also used to access the service maintenance mode.

NOTE: It will not start or restart a program unless the door safety button has also been pushed in. If the safety button is not pushed in a door switch fault (refer page 18) will be indicated.

2. Program Button

Used to select the desired program.

Programs available are:

Sensor Programs – Extra Dry, Normal Dry and Iron Dry

Manual Programs – 90 min, 60 min and 30 min.

A new program can be selected when the dryer is running, the drying process will continue using the settings from the new program.

If the program is changed from a Manual program to a Sensor program then an ambient check (refer Extra Dry, Normal Dry and Iron Dry program description on page 17) may occur.

NOTE: When the temperature setting is on Airing the Sensor programs cannot be selected.

3. Temperature Button

Used to select one of the three settings, Normal, Delicates or Airing.

The Delicates setting will cause the heater to cycle on for less time than the Normal setting. The heater on/off cycling time will vary on both settings depending on program selected, ambient temperature etc.

On the Airing setting the heater is not used at all.

A new setting can be selected when the dryer is running, the drying process will continue using the new setting.

NOTE: Airing cannot be selected when one of the Sensor programs has been selected.

4. Option Button

Is used to select/de-select the end of program buzzer and crease free option.

Each successive press will cycle through the options as below. The Buzzer on option is automatically selected each time the dryer is powered up. The respective LED will be on when the option is selected.

End of program Buzzer on

Crease Free on

Buzzer and Crease Free on

No Options selected

Repeated

NOTE: The buzzer is only turned off for the end of program indication, it does not affect the button press or error beeps.

5. Power Button

A push button switch in the incoming active line that isolates the whole dryer when turned off.

NOTE: The neutral line is not switched/isolated.

6. Progress Indicators

Three LEDs, Drying, Cooling and Finished.

Drying indicates the program is in the heating phase and Cooling indicates it is in the cool down stage.

The Finish LED indicates that the selected program has finished, but there are two different indications.

If it is on and the Crease Free LED is flashing the selected program has finished and the dryer is currently in the crease free mode.

If it is on with the Reminder Clean The Filter LED the dryer has completed the selected program and if selected the Crease Free option.

7. Reminder Clean The Filter LED

The LED is illuminated at the end of the program and if selected the crease free option has finished.

The LED is designed to remind the customer to clean the filter, it **DOES NOT** indicate that the filter is blocked.

8. Buzzer

Is used to, confirm button presses, the end of the program and fault/messages.

When a button is pressed a short beep confirms successful selection while a long beep indicates that particular selection is not allowed.

The end of program beeps can be turned off using the option button.

9. Child Lock

The child lock option is used to stop the settings being changed once a program has been started. It does not affect the On/Off switch

To select the option press and hold the Program and Temperature button together until a beep is heard and the Child Lock LED illuminates, approx 2 seconds. To turn the child lock off press and hold the same buttons until a beep is heard and the LED goes off.

NOTE: If the door is opened during the program the Child Lock option will be de-activated and will have to be reset once the dryer has been restarted.

PROGRAM DESCRIPTION

1. Manual Programs

1.1. 90 min; 60 and 30 (with Normal or Delicate Temperature setting)

Consists of two phases;

Heating - which is the selected time less 10 minutes (Drying LED on)

Cool Down - a 10 minute no heat period at the end of the cycle (Cooling LED on)

Initially the motor runs using a reversing timing of;

58 sec on

2 sec off

58 sec opposite direction

2 sec off

repeated.

After this period it will then use a 4 minute on time and 2 second pause time. As the load dries the motor on time will gradually decrease until it reaches 58 seconds.

The full power of the heater, i.e. both elements of the heater, is used during the heating phase. With a Normal Temperature the element is on for 100% of the motor on time, and with Delicates it is on for 80% of the motor on time. With both settings it is cycled off during the motor pause stages and will also be cycled off if the exhaust air reaches 55°C, and will cycle back on when the exhaust air temperature drops to 50°C.

At the end of the Cool Down period the buzzer (if selected) will sound and the Finish LED will illuminate to indicate the end of the program. If the door is not opened within 15 minutes the buzzer will sound again, the buzzer will not sound again after this point.

If the Crease Free option is not selected the Reminder Clean the Filter LED will also illuminate, if the option is selected then the Crease Free LED will also be flashing.

1.2. 90 min; 60 and 30 (with Airing Temperature setting)

The dryer will run for the selected time without the heater being used with a motor reversing timing of;

58 sec on

2 sec off

58 sec opposite direction

2 sec off

repeated.

At the end of the selected time the buzzer (if selected) will sound, and the Finish LED will illuminate to indicate the end of the program. If the door is not opened within 15 minutes the buzzer will sound again, the buzzer will not sound again after this point.

If the Crease Free option is not selected the Reminder Clean the Filter LED will also illuminate, if the option is selected then the Crease Free LED will also be flashing.

2. Sensor Programs

2.1. Extra Dry, Normal Dry and Iron Dry

Consists of three basic stages; Ambient check
 Heating
 Cool Down

The ambient check is used to stabilise any temperature difference between the dryer and room temperature. This stage consists of the dryer running without the heater being on using a maximum 12.5 minute reversing timing with a 2 second pause between change of direction, i.e once the dryer has established the ambient temperature it will discontinue this stage and proceed to the heating stage. Under normal conditions this process will take about 4 to 6 minutes.

During the heating stage whenever the heater is on full power is used, ie both elements are energised at the same time. The heater will be cycled on and off during this period. The on and off times will vary depending on the program and temperature selected, ambient temperature, drying rate of the load etc. It is also turned off during the 2 second motor reversing pause. Similarly the motor reversing times will vary depending on what is selected and what is being sensed. The motor on times can vary anywhere between 4 minutes and 58 seconds, with a 2 second pause between direction changes.

NOTE: If the ambient temperature sensed is above 29°C, then after an initial heating period the dryer will do another ambient check as per above.

The Cool Down period will commence when all the necessary criteria have been met and consists of the dryer operating with no heater and using 58 second motor on times. It will stay in this mode until the exhaust air temperature drops to 30°C, at which time the dryer will stop and the buzzer (if selected) sound and the Finish LED illuminate to indicate the end of the program. If the door is not opened within 15 minutes the buzzer will sound again, the buzzer will not sound again after this point.

If the Crease Free option is not selected the Reminder Clean the Filter LED will also illuminate, if the option is selected then the Crease Free LED will also be flashing.

3. Crease Free Option

At the end of the selected program the Finish LED will illuminate and the buzzer (if selected) will sound once. The Crease Free LED will flash and the motor will run for 5 seconds of every minute until the door is opened or 3 hours has elapsed. If the 3 hour limit is reached then the buzzer (if selected) will sound and the Crease Free LED will go off to indicate the end of the Crease Free period. The Reminder Clean the Filter LED will illuminate. If the door is not opened within 15 minutes the buzzer will sound again, the buzzer will not sound again after this point.

FAULT MESSAGES

1. Exhaust Sensor Fault

The buzzer will give 5 beeps, all program LEDs will flash for 5 seconds and the dryer will continue with the cycle. The warning beeps and flashing LEDs will occur every 30 seconds.

On Manual programs it will run for the time remaining and in Sensor programs it will run for 90 minutes. As the exhaust air temperature can not be sensed the element will be cycled on and off at a preset amount. The cycling time of the element will vary depending on the amount of time remaining.

NOTE: When this fault exists the dryer can still be used but regardless of the Sensor program selected the dryer will use the 90 minute manual program, Manual programs will use the selected program, and with both types of programs the element will cycle as above. The buzzer will also still be sounding.

2. Door Switch Fault

If an open circuit is sensed the dryer will stop and beep 6 times. After the beeps the selected Program LED will flash for 30 seconds if in a Sensor program or 60 seconds if in a Manual program, after which it will stop flashing and remain on. There are no further indications as this is the same indication as if the door is opened while the dryer is running.

MAINTENANCE MODE

There are two basic test modes available in the maintenance mode:

Service Test
Factory Test (not required for service)

To exit the maintenance mode at any time power down the dryer.

1. Access the maintenance mode by:

1.1. Ensuring the dryer is powered down

1.2. Press and hold the Start/Pause button and power the dryer up. The buzzer will beep and all the LEDs will come on.

1.3. Press the Start/Pause button twice within 5 seconds of power up.

Note: If the button is not pressed twice within the 5 second period the dryer will go to standby mode waiting to start a program.

The dryer is now in maintenance mode ready to start the service test.

2. Press and Hold the Start/Pause button to start the test. After approx 2 seconds the test will start and consists of the following :

2.1. All the LEDs being illuminated and the motor running for 5 seconds in each direction with a 2 second pause between direction changes.

During this time the door switch can be checked to ensure the motor stops when the door is opened. Once the door is opened the test can be continued by, closing the door and pressing the door safety button.

- 2.2. Button Test – Push each button in turn but wait for a beep at each one to indicate the selection has been successful before moving onto the next.

NOTE: If the test does not progress onto the next stage then restart the test and during the LED check in 2.1 make sure illuminated LEDs cannot be seen through the trim between the Option and Progress LEDs. If the are LEDs visible the board is programmed for a different style of dryer and will have to be replaced.

- 2.3. Door Switch - is now checked, if the door switch/circuit is open the buzzer will beep continuously and on early built dryers the Reminder Clean the Filter LED will flash, and on later built dryers the Progress LEDs will flash.

- 2.4. Heater and Exhaust Sensor

NOTE This is the last test and will time out after sixty seconds, at which point the dryer will go to the standby mode waiting to start a program.

Once the door switch test has occurred the motor and heater will be turned on. The heater will be at full power and the motor will run 10 seconds in each direction with a 2 second pause between direction changes. On later built dryers the element will not come on if a sensor fault (refer below) is detected

If an exhaust sensor fault is detected the buzzer will beep and the Reminder Clean the Filter LED will flash. The LED flashes at different rates depending what is wrong with the sensor –

Fast (4 per second) = open circuit sensor, broken wiring or multi pin plug not correctly fitted to the control board

Slow (2 per second) = Short circuit in sensor or wiring.

The sensor resistance at different temperatures is as per the table below.

TEMP (°C)	Resistance (Ohms)
55	2957
50	3566
45	4326
40	5281
35	6489
30	8026
25	10000
20	12553
15	15882
10	20261
5	26076
0	33871

