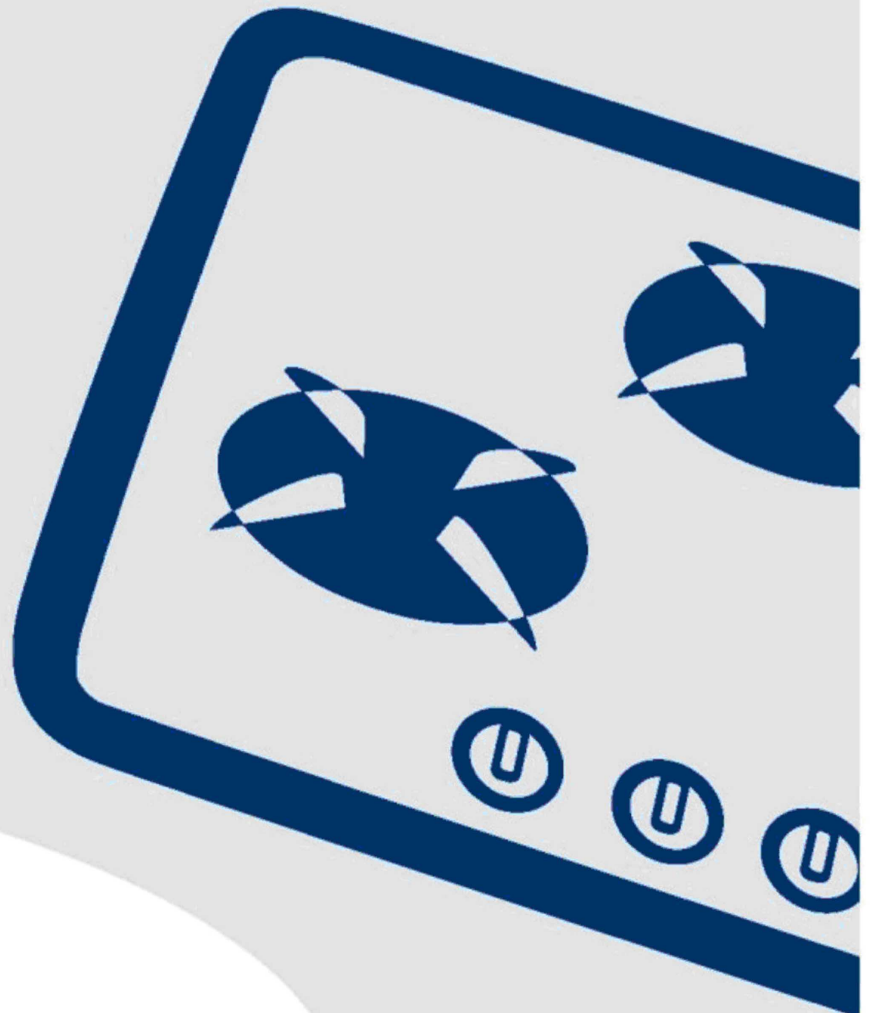


Thinking of you
Electrolux

instruction manual
operation and installation



model

EGG7422S

EGG7432S

EHG7322X

EHG7332X

SERVICE MANUAL

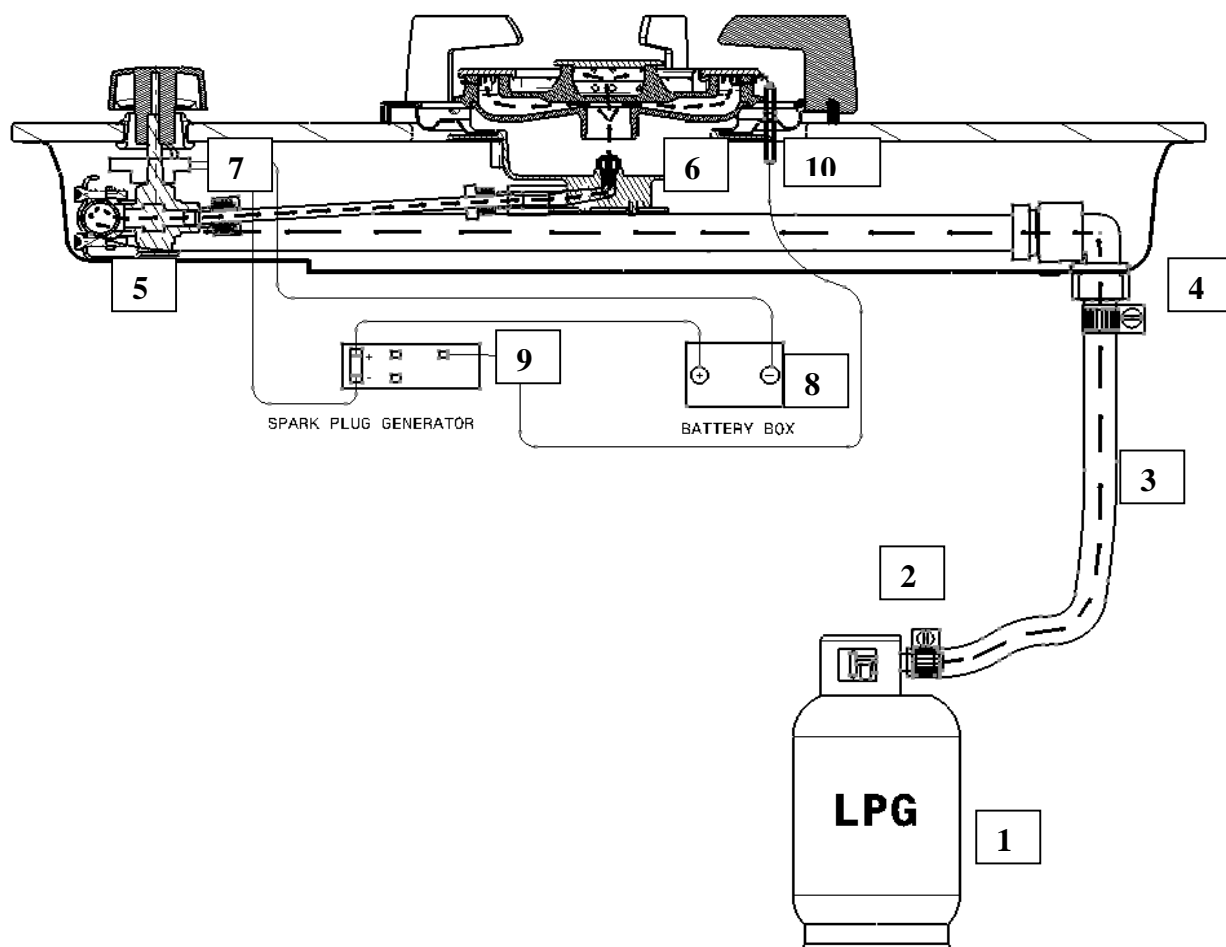
C O N T E N T S

1. GENERAL NOTES	2
2. HOW DOES GAS BURNER OPERATE	3
3. COMPONENTS SPECIFICATION&ACCESSORIES	4
3.1 City gas accessories	
4. TOOLS	6
5. REPAIR PROCESS	6
5.1 Remove the dirty oil from nozzle	
5.2 Remove the gas valve	
6. WIRING DIAGRAM	8
7. CONVERSION DETAILS	9
8. TAKE CARE OF GLASS TOP	10
9. SPARE PARTS	11
10. TROUBLE SHOOTING	23

1. GENERAL NOTES

- 1.1 Warning for models which connect to mains electrical power, before exposing any of the internal electrical wiring the appliance must be disconnected from electrical power by unplugging the service cord from the electrical outlet. For models which connect to battery power, before exposing any of the internal electrical wiring the appliance must be remove the battery also.
- 1.2 Any servicing carried out on gas containing components where seals are broken including manifold, regulator, valves and burner supply pipes should be followed by a leak test. Gross leaks can be detected by connecting a manometer to the regulator test point, pressurising the manifold and then shutting off the gas with a ball valve. A falling manometer reading indicates a leak. Small leaks can be located with soap and water applied at the connection.
- 1.3 Burner supply pipes leading from the burner control to the burner should have their compression fittings tightened firmly **but not over tightened** (If a torque spanner is used set this to 10 – 12Nm). If the tubes are damaged they should be replaced. The soundness of the connections on the burner supply tubes can be tested by blocking the injector orifice temporarily, eg. by fitting an injector that has been blocked and leak testing the fittings.
- 1.4 When reassembling the appliance **any earth leads which have been disconnected must be** re-connected.
- 1.5 Reassembly procedures are a reversal of removal procedures.
- 1.6 Replace the spare part with original spare parts. The modify part must not be used.
- 1.7 All the screws in this appliance have been designed for difference purpose. They must be use in the right position and must be the right dimension. If there are any differences from the original design they may have the serious accident.

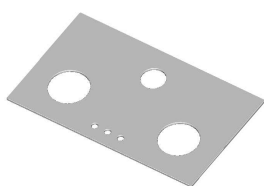
2. HOW DOES GAS BURNER OPERATE



1. Gas tank
2. Low pressure regulator (**Safety warning: Do not** use high pressure regulator)
3. Flexible rubber hose or copper tube
4. Elbow coupling gas with fibre washer (**Warning: Do not** use regular rubber washer)
5. 2 steps safety valve
6. Burner
7. Ignition switch
8. Battery 1.5V size D
9. Spark generator
10. Spark plug

Gas from the tank (1) is released from the *low pressure* regulator (2) into the hose or tube (3), travelling pass the elbow coupling to the valve (4). To ignite the burner, press down and turn the safety valve (5) counter-clockwise simultaneously. This opens up the valve, letting the gas to the nozzle of the burner (6), and turns the ignition switch to **on** (7) at the same time. The electrical current is automatically supplied from the battery to spark plug generator (8), and then to the pin heads (9), causing the ignition (10). The burner is ignited and bursts into flame (11).

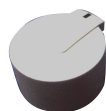
3. COMPONENTS SPECIFICATION & ACCESSORIES



- Glass 3B : Float glass 8.0x460x760 mm



- Bottom plate forming : Zinc coat



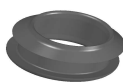
- Knob : heat + flame resistance >17



- Washer : fiber



- Hose end : Brass (size 1/2")

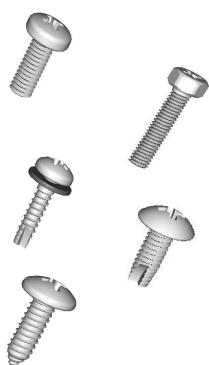
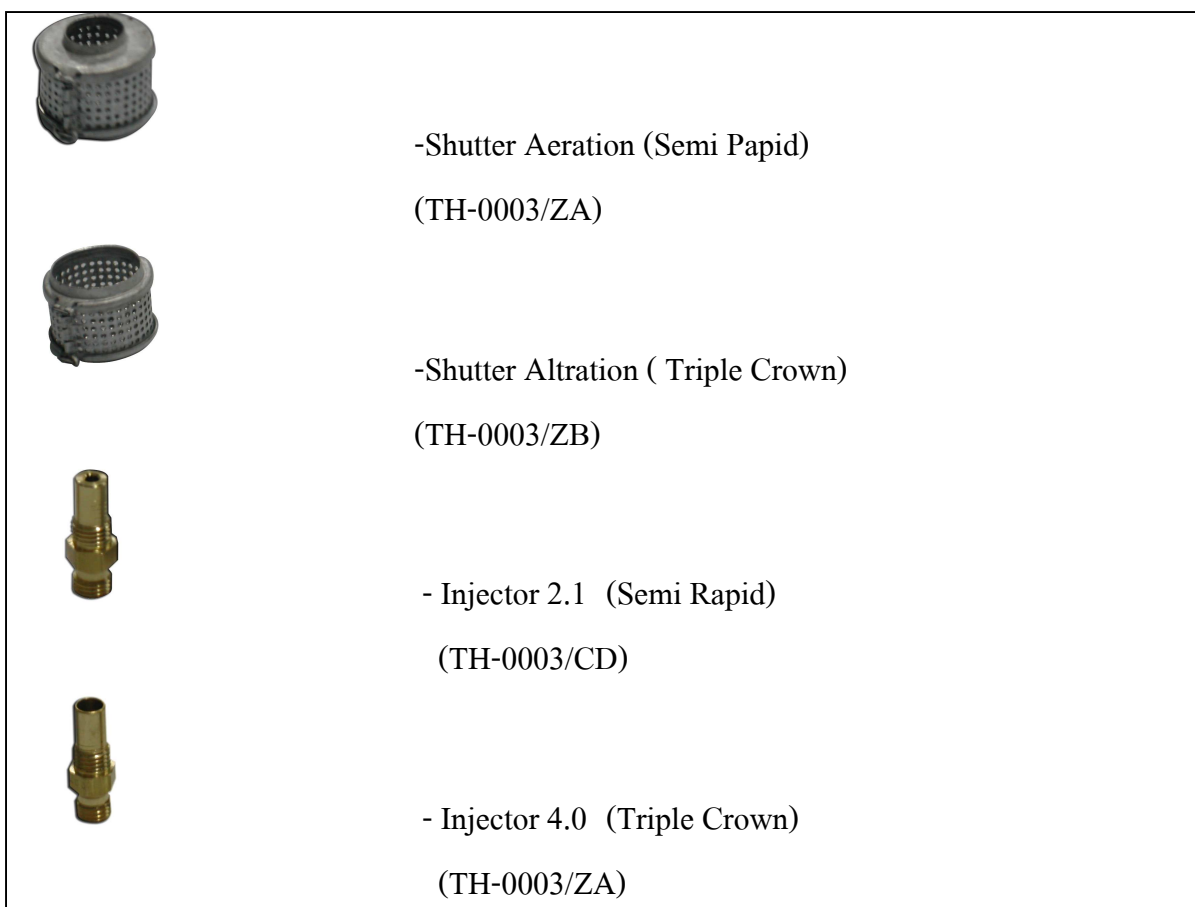


- Rubber grommet (glass model) : Silicone heat resistance



- Spark generator 4p : 1.5Vdc+90C+electrode10KV

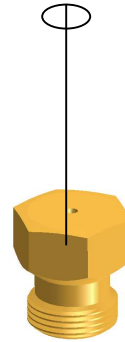
3.1 Citi Gas Accessories



- Screw, M4x0.7x10 IP
- Screw, M4x0.7x18 H
- Screw, M3x12T + B stainless
- Screw, #6/32 x 9 PPZF
- Screw, #8 x 1/2 T+ Z

4. TOOLS

- Nut spinner No. 7
- Philip / Flat screw driver
- Spanner No. 15
- Nozzle cleaner
- Gas leak detector
- Needle for dirty removal from nozzle



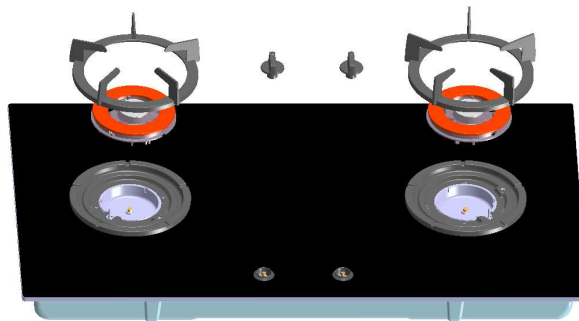
5. REPAIR PROCESS

5.1 Remove out the dirty oil from nozzle

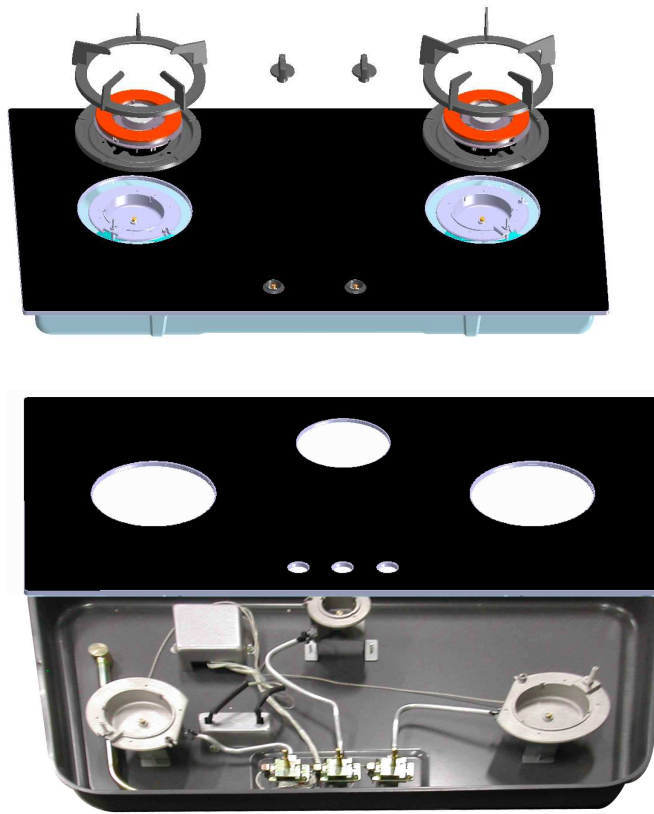
1. Clean the head of nozzle with the cloth
2. Use the nozzle cleaner or the needle insert into the hole of nozzle.
3. Do repeat the step 1 and 2 for a few time until the nozzle is clean.

5.2 Removal of Hob & Access to Internal Components

1. Isolate the appliance from battery power.
2. Remove trivets and burners from hob.
3. Remove the control knobs from the valve shafts.

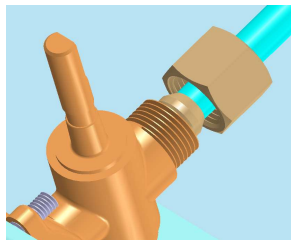


4. Remove burner mount retaining screws, 2 screws per burner and 4 on the wok burner (2.5mm Torque Screwdriver required).
5. For models with a separate button ignition system, remove the switch button and ignition pack retaining nut. Alternatively, lift the hob sufficiently to access and release the ignition leads and battery supply cable from the ignition pack.
6. The hob may now be lifted away from the appliance.



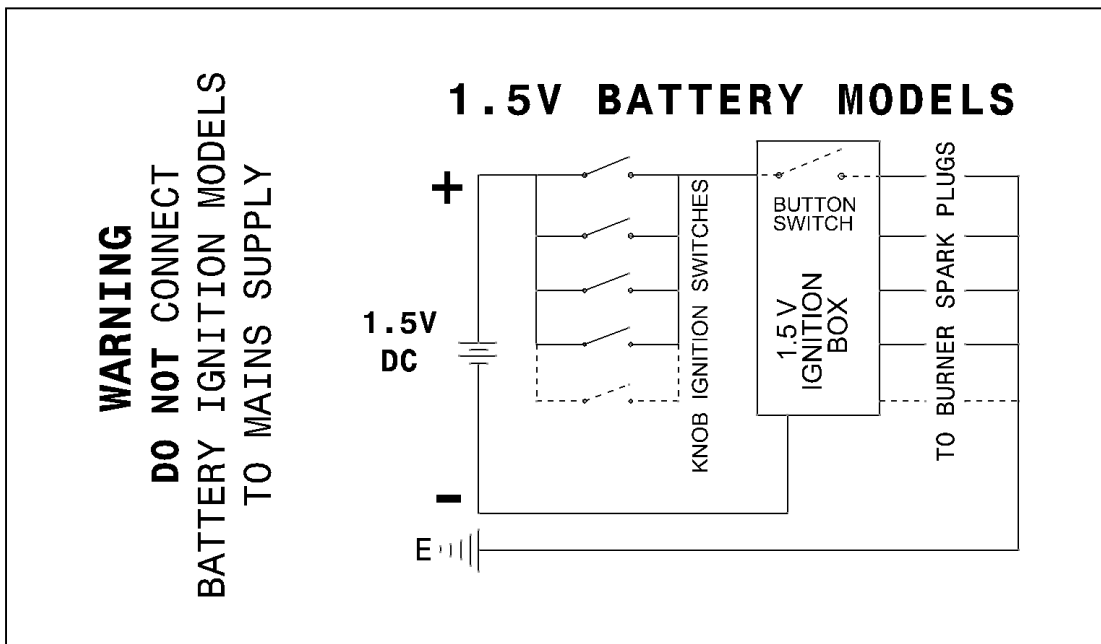
By removing the hob the following parts are accessible for service or replacement.

- Burner mounting cups.
- Burner supply tubes. Note: When fitting the burner tubes to the valves and burner mounting cups the nuts should be fastened with a torque of 10-12Nm.
- Manifold & Valves. Note: To remove the manifold or valves it will be necessary to isolate and disconnect the appliance from gas supply.



- Switch harness assembly and low voltage wiring.
- Ignition spark plug and lead assemblies. These are fastened to the burner bases by retaining clips, located on the underside of the burner base.
- Ignition pack. For models without a separate ignition switch this is clipped to the base or attached with double sided adhesive. For models with a separate ignition switch this is fastened to the hob with a retaining nut. Observe the active & neutral are correctly connected in accordance with the markings on the ignition pack when replacing this unit.

6. WIRING DIAGRAM



7. CONVERSION DETAILS

The appliance is convertible between Natural Gas & LP.

Procedure

1. Turn off gas supply to appliance.
2. Disconnect appliance from electrical power.
3. Remove the trivets and the burner caps & distributors.
4. Remove the existing injectors and replace with the injectors shown in the table below.
5. Remove the control knobs to access the by-pass screw in the valve bodies.
6. Remove the regulator and replace with appropriate regulator or test point adapter as stated in table below, and reconnect the appliance.
7. Turn on gas & check for leaks. Replace the Burner crowns & caps.
8. Check and adjust the test point pressure according to the procedure in the installation instructions.
9. Manually light all burners with a hand held ignition source and operate burners at maximum.
Note: Do not reconnect the appliance to electrical power until this procedure is complete.
10. For each hotplate burner adjust the burner to minimum and screw in the bypass screw until a small stable flame results. Adjust the burner to maximum and back to minimum to ensure correct adjustment.
11. Re-connect to electrical power and check ignition.

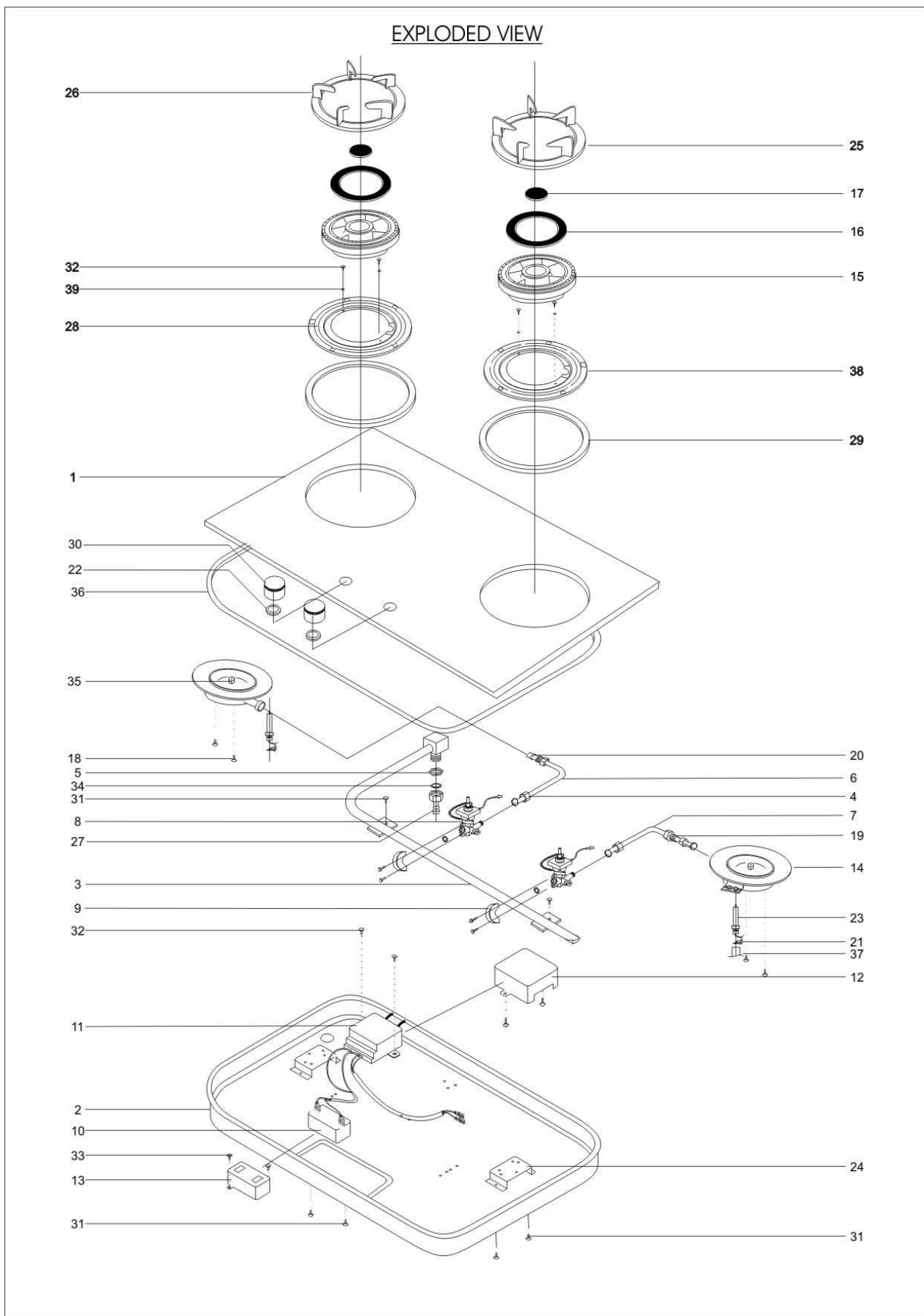
8. TAKE CARE OF GLASS TOP

Persistent stains may require vigorous rubbing with nylon scourer or creamed powers cleansers. Household enamel cleaners are available. Following the instruction in their use. Harsh abrasive cleaner ,powder cleaner steel wool or wax polishes should not be used. Advise end user do not use glass as per working top.

Models With Standard Valves (No Flame Failure Safety Devices)

	<u>LPG</u>		<u>City-gas</u>		<u>Natural Gas</u>	
	<u>30.0 mbar</u>		<u>8.0 mbar</u>		<u>20.0 mbar</u>	
BURBERS	Injector size	Rating (KW)	Injector size	Rating (KW)	Injector size	Rating (KW)
Triple crown	0.98	4.0	4.00	4.5	1.5	4.0
Semi-rapid	0.71	2.0	2.10	2.0	0.96	2.0

9. SPARE PARTS

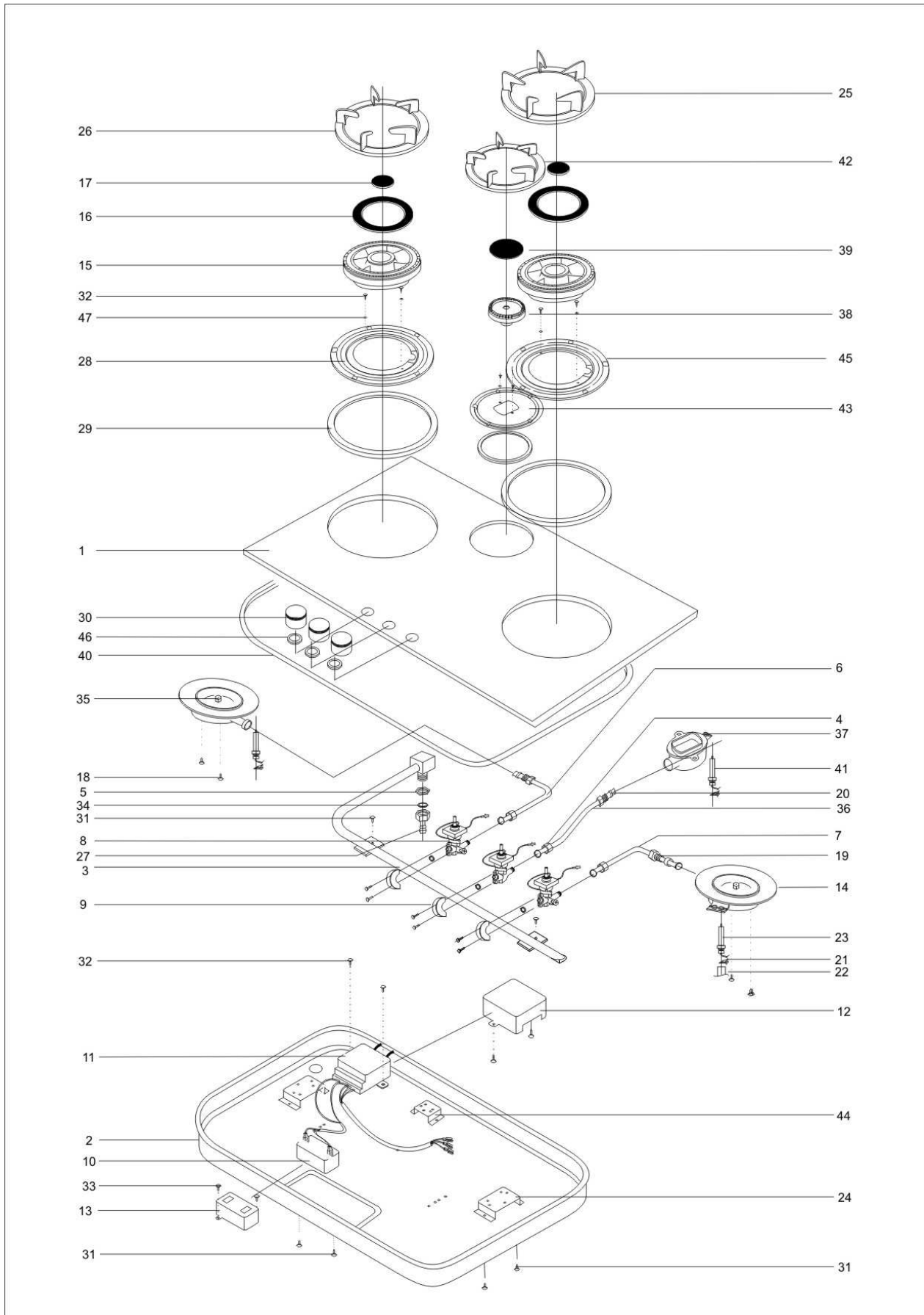


MODEL - ELECTROLUX EGG 7422S PARTS LIST
--

REF # :
H/A/333

NO	CODE NO	PART NAME	UNIT (PCS)
1	TH-0001/ED	GLASS - 2 BURNER (ELECTROLUX)	1
2	TH-0002/AB	BOTTOM PLATE - 2 BURNER (Z) SABAF	1
3	TH-0004/AZ	IRON PIPE (2 BURNER) WITH FITTING (L:40.5)	1
4	TH-0004/KH	BRASS NUT HEX 14MM x M12 x 1.2	1
5	TH-0004/KD	FITTING NUT HEX 25.4 x L 45.5MM	2
6	TH-0004/VP	ALUMINIUM PIPE (LZO) 2BG	1
7	TH-0004/XP	ALUMINIUM PIPE (RZO) 2BG	1
8	TH-0005/AH	IGNITION VALVE (S) BKP (J) III-100	2
9	TH-0005/RA	IGNITION VALVE BRACKET (THH-006)	2
10	TH-0005/VA	BATTERY BOX	1
11	TH-0005/WB	GENERATOR 2P (SABAF) DC	1
12	TH-0005/UC	GENERATOR COVER	1
13	TH-0005/UE	BATTERY BOX COVER	1
14	TH-0005/ZB	TRIPLE CROWN BODY WITH INJECTOR	2
15	TH-0006/ZA	BURNER TRIPLE CROWN WOK CYCLIN	2
16	TH-0006/ZD	B/CAP TRIPLE CROWN OUTER GLOSS	2
17	TH-0006/ZC	B/CAP TRIPLE CROWN INNER GLOSS	2
18	H2-0219/AP	SCREW -MSP 4*8 (SW)	4
19	TH-0004/KI	FEMALE NUT - ZINC PLATING	2
20	TH-0004/LC	OLIVE 7MM	2
21	TH-0005/ZZ	SPARKER CLIP	2
22	TH-0016/CA	KNOB GASKET	2
23	TH-0005/ZB	SPARKER FOR TRIPLE FLAME	2
24	TH-0006/YX	SABAF BURNER STAND - BIG -NICKY	2
25	TH-0008/KA	K.STAND - GLASS HOB (R) BH	1
26	TH-0008/KB	K.STAND - GLASS HOB (R) BL	1
27	GH-0025/AA	CONNECTOR	1
28	TH-0009/DA	ENAMEL TRAY BIG (L)	2
29	TH-0011/AE	SILICONE RUBBER TUBING D- 165MM	2
30	TH-0016/BZ	KNOB (NICKY)	2
31	TH-0018/AA	SCREW M4x10 (TAPLITE) S/S	10
32	TH-0018/AP	SCREW S/S	8
33	TH-0018/AF	SCREW M4x6 (TAPLITE) S/S	4
34	TH-0015/AB	GASKET FOR CONNECTOR	1
35	TH-0003/CE	INJECTOR (0.98)	2
36	TH-0014/AB	FOAM WITH ONE SIDE D/SIZE TAPE	2.6
37	TH-0026/AD	SHRINK TUBE - 6X10MM	2
38	TH-0009/DB	ENAMEL TRAY BIG (RIGHT) - NICKY	1
39	TH-0015/AH	GASKET FOR S/S SCREW	4
41	H3-0013/AA	BATTERY -D	1
42	H6-0041/AA	CABLE TIE	2
43	TH-0019/AE	HOB POLYFOAM ELECTROLUX-NICKY	1

44	EH-0161/AB	BUBBLE SHEET : 880 x 580 x 10MM	1
45	H2-0202/CD	GUARANTEE CARD : ELECTROLUX	1
46	TH-0019/BE	BIG ROUND CUSHION - NICKY	2
47	TH-0020/AA	CUT OUT DIE CUT PAD (THH HOB)	1
48	TH-0021/FE	HOB LINER ELUX. NO MODEL - NICKY	1
49	TH-0022/EA	INST. MANUAL - ELECTROLUX EGG7422 & EGG 7432	1
50	TH-0023/BD	REGULATOR STICKER	1
51	TH-0023/BE	BATTERY STICKER (ELUX HOB)	1
52	TH-0023/IA	GAS LEAKAGE WARNILNG SLIP	1
53	TH-0027/DS	PACKING STICKER - EGG 7422	2
54	TH-0027/ES	RATING LABEL - EGG 7422	1
55	TH-0028/AA	GAS TYPE LABEL (LPG) ZANUSSI	1
CITY GAS ACCESSORIES			
56	TH-0003/CC	INJECTOR 4.0 (TRIPLE CROWN)	2
57	TH-0003/ZB	SHUTTER AERATION (TRIPLE CROWN)	2



MODEL - ELECTROLUX EGG 7432S PARTS LIST
--

REF # :
H/A/332

NO	CODE NO	PART NAME	UNIT (PCS)
1	TH-0002/EF	GLASS - 3 BURNER (NICKY)	1
2	TH-0002/BC	BOTTOM PLATE - 3 BURNER (Z) SABAF	1
3	TH-0004/BZ	IRON PIPE (3 BURNER) WITH FITTING (L:40.5)	1
4	TH-0004/KH	BRASS NUT HEX 14MM x M12 x 1.2	1
5	TH-0004/KD	FITTING NUT HEX 25.4 x L45.5MM	1
6	TH-0004/VQ	ALUMINIUM PIPE (LZO) 3BG	1
7	TH-0004/XQ	ALUMINIUM PIPE (RZO) 3BG	1
8	TH-0005/AH	IGNITION VALVE (S) BKP (J) III-100	3
9	TH-0005/RA	IGNITION VALVE BRACKET (THH-006)	3
10	TH-0005/VA	BATTERY BOX	1
11	TH-0005/XB	GENERATOR 3P (SABAF)	1
12	TH-0005/UC	GENERATOR COVER	1
13	TH-0005/UE	BATTERY BOX COVER	1
14	TH-0006/ZB	TRIPLE CROWN BODY WITH INJECTOR	2
15	TH-0006/ZA	BURNER TRIPLE CROWN WOK CYCLIN	2
16	TH-0006/ZD	B/CAP TRIPLE CROWN OUTER GLOSS	2
17	TH-0006/ZC	B/CAP TRIPLE CROWN INNER GLOSS	2
18	H2-0219/AP	SCREW -MSP 4*8 (SW)	6
19	TH-0004/KI	FEMALE NUT - ZINC PLATING	3
20	TH-0004/LC	OLIVE 7MM	3
21	TH-0005/ZZ	SPARKER CLIP	3
22	TH-0026/AD	SHRINK TUBE - 6X10MM	2
23	TH-0005/ZB	SPARKER FOR TRIPLE FLAME	2
24	TH-0006/YX	SABAF BURNER STAND - BIG -NICKY	2
25	TH-0008/KA	K.STAND - GLASS HOB (R) BH	2
26	TH-0008/KB	K.STAND - GLASS HOB (R) BL	1
27	GH-0025/AA	CONNECTOR	1
28	TH-0009/DA	ENAMEL TRAY BIG (L)	1
29	TH-0011/AE	SILICONE RUBBER TUBING D- 165MM	3
30	TH-0016/BZ	KNOB (NICKY)	3
31	TH-0018/AH	SCREW M4x10 (TAPLITE) S/S	12
32	TH-0018/AP	SCREW S/S	6
33	TH-0018/AL	SCREW M4x6 (TAPLITE) S/S	4
34	TH-0015/AB	GASKET FOR CONNECTOR	1
35	TH-0003/CA	INJECTOR 0.98)	2
36	TH-0004/ZQ	ALUMINIUM PIPE (CZO) 3BG	1
37	TH-0006/ZF	SEMI RAPID B/BODY WITH INJECTOR	1
38	TH-0006/ZE	BURNER CROWN SEMI RAPID	1
39	TH-0006/ZG	BURNER CAP SEMI RAPID GLOSS	1
40	TH-0014/AB	FOAM WITH ONE SIDE D/SIZE TAPE	2.7

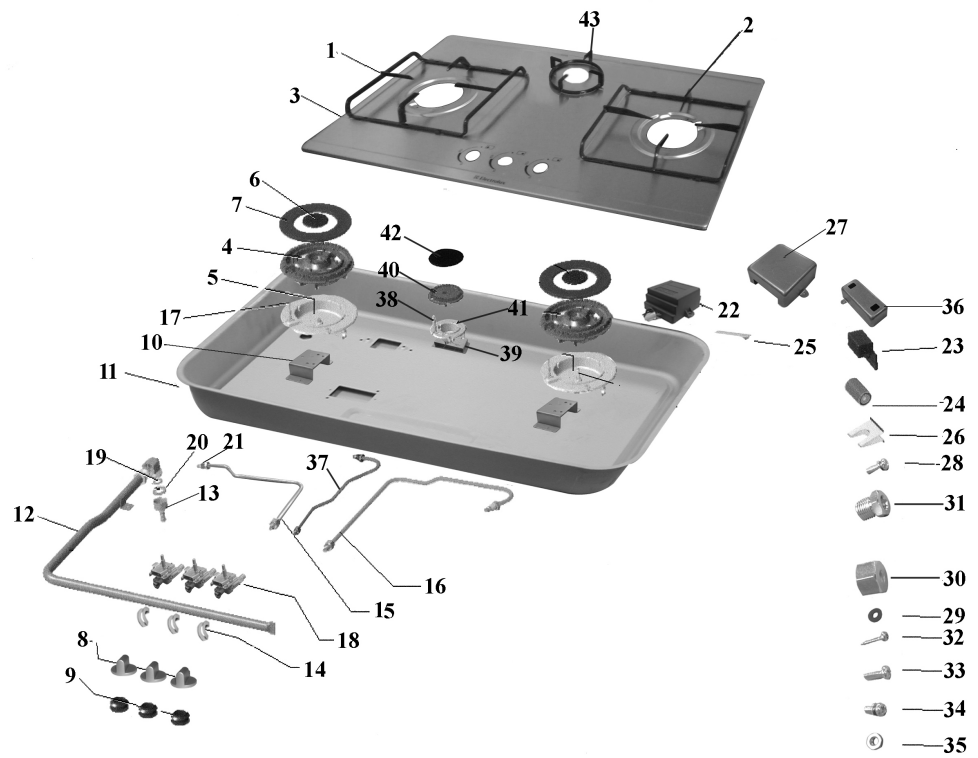
41	TH-0005/ZC	SPARKER FOR SEMI RAPID	1
42	TH-0008/KC	K.STAND - GLASS HOB (R) SL- ELECTROLUX	1
43	TH-0009/DA	ENAMEL TRAY SMALL NICKY	1
44	TH-0006/YY	BURNER STAND MEDIUM NICKY	1
45	TH-0009/DB	ENAMEL TRAY BIG (RIGHT) - NICKY	1
46	TH-0016/CA	KNOB GASKET	3
47	TH-0015/AH	GASKET FOR S/S SCREW	6
48	H3-0013/AA	BATTERY -D	1
49	H6-0041/AA	CABLE TIE	2
50	TH-0019/AE	HOB POLYFOAM ELECTROLUX-NICKY	1
51	TH-0019/BE	BIG ROUND CUSHION - NICKY	2
52	TH-0019/CE	CENTRE ROUND CUSHION PACK-NICKY	1
53	EH-0161/AB	BUBBLE SHEET : 880 x 580 x 10MM	1
54	H2-0202/CD	GUARANTEE CARD : ELECTROLUX	1
55	TH-0020/AA	CUT OUT DIE CUT PAD (THH HOB)	1
56	TH-0021/FE	HOB LINER ELUX. NO MODEL - NICKY	1
57	TH-0022/EA	INST. MANUAL - ELECTROLUX EGG7422 & EGG 7432	1
58	TH-0023/BD	REGULATOR STICKER	1
59	TH-0023/BE	BATTERY STICKER (ELUX HOB)	1
60	TH-0023/IA	GAS LEAKAGE WARNILNG SLIP	1
61	TH-0027/DT	PACKING STICKER - EGG 7432	2
62	TH-0027/ET	RATING LABEL - EGG 7432	1
63	TH-0028/AA	GAS TYPE LABEL (LPG) ZANUSSI	1
CITY GAS ACCESORRIES			
64	TH-0003/CC	INJECTOR 4.0(TRIPLE CROWN)	2
65	TH-0003/CD	INJECTOR 2.1(SEMI RAPID)	1
66	TH-0003/ZA	SHUTTER AERATION (SEMI RAPID)	1
67	TH-0003/ZB	SHUTTER AERATION (TRIPLE CROWN)	2

MODEL - ELECTROLUX EHG 7322X 76SS ETU PARTS LIST

NO	CODE NO	PART NAME	UNIT (PCS)
1	TH-0008/NC	SQ ENAMEL STAND(PAN)76SS ETU	1
2	TH-0008/ND	SQ ENAMEL STAND(WOK)76SS ETU	1
3	TH-0001/CC	TOP PLATE-2B-ETU-W/O HOLE	1
4	TH-0006/ZA	BURNER TRIPLE CROWN WOK CYCLIN	2
5	TH-0006/ZB	TRIPLE CROWN BODY WITH INJECTO	2
6	TH-0006/ZC	B/CAP TRIPLE CROWN INNER GLOSS	2
7	TH-0006/ZD	B/CAP TRIPLE CROWN OUTER GLOSS	2
8	TH-0016/BY	KNOB ETU (PART:305449900)	2
9	RH-0015/AB	RUBBER GROMMET NICOLE	2
10	TH-0006/YR	SABAF BURNER STAND-Z-(MEDIUM)	2
11	TH-0002/AB	B/PLATE 2B-SABAF-DIAM:22MM	1
12	TH-0004/AZ	I/PIPE 2B W/FITTING(L:40.5MM)	1
13	GH-0025/AA	LOCAL : CONNECTOR	1
14	TH-0005/RA	IGNITION VALVE BRACKET(THH-006	2
15	TH-0004/PK	ALUM PIPE(TC)POWER/ETU-76SS	1
16	TH-0004/PN	ALUM PIPE(TC)76SS ETU-RIGHT	1
17	TH-0005/ZD	SPARKER FOR TRIPLE FRAME(GLAZE	2
18	TH-0005/AH	I/VALVE(S)BKP(J)III-100(CONNEC	2
19	TH-0015/AE	GASKET:OD 18.4 X ID 12MM	1
20	TH-0004/KD	FITTING NUT HEX(25.4 X L45.5MM	1
21	TH-0004/LC	OLIVE (DIA 7MM)	4
22	TH-0005/WB	GENERATOR 2P (SABAF) DC	1
23	TH-0005/VA	BATTERY BOX	1
24	H3-0013/AA	BATTERY (D)	1
25	H6-0041/AA	CABLE TIE [CV-100]	2
26	TH-0005/ZZ	SPARKER CLIP	2
27	TH-0005/UC	GENERATOR COVER (ALSTAR)	1
28	OT-0002/AA	SCREW-MSP 4 X 12 (SW) ZN	6
29	TH-0015/AH	GASKET FOR S/S SCREW	4
30	TH-0004/KH	M14 PLATING NUT HEX 17XM14X1.0	2
31	TH-0004/KI	TRIPLE FLAME NUT	2
32	TH-0018/AN	SCREW B(T10)M3 X 14BT(TAP)304	4

33	TH-0018/AK	SCREW M4 X 12(TAPLITE)	6
34	H2-0219/AP	SCREW-MSP 4 x 8 (SW)	2
35	H6-0037/AB	NUT HEX M4 [Blue Zink] 7mm	6
36	TH-0005/UE	BATTERY BOX COVER (ALSTAR)	1
37	TH-0012/AA	GAS HOB BASE LINING	1
38	EH-0161/AB	BURBLE SHEET:880 X 580 X 10MM	1
39	H2-0202/CD	GUARANTEE CARD: ELECTROLUX	1
40	XH-0001/GA	BATTERY STICKER (XINBAO HOB)	1
41	TH-0019/AE	HOB POLYFOAM-ELECTROLUX-NICKY	1
42	TH-0019/DA	TRIPLE CROWN TOP PACK FOAM	2
43	TH-0020/AN	CUT OUT DIE THH(MULTI LANGUAGE	1
44	TH-0021/FG	HOB LINER-ELUX POWER/ETU76SS	1
45	TH-0022/ED	INST.MANUAL-ETU/POWER 76SS	1
46	TH-0023/BD	REGULATOR STICKER	1
47	TH-0023/BQ	GAS LEAKAGE WARNING SLIP-ELUX	1
48	TH-0026/AD	SHRINK TUBE-6MM X 100MM	2
49	TH-0027/FT	PACKING STICKER-EHG7322X(LPG)	2
50	TH-0027/GT	RATING LABEL-EHG7322X(LPG)	1
51	TH-0028/AA	GAS TYPE LABEL(LPG) ZANUSSI/	1

EHG 7332X(76SS ETU)



MODEL - ELECTROLUX EHG 7332X 76SS ETU PARTS LIST

NO	CODE NO	PART NAME	UNIT (PCS)
1	TH-0008/NC	SQ ENAMEL STAND(PAN)76SS ETU	1
2	TH-0008/ND	SQ ENAMEL STAND(WOK)76SS ETU	1
3	TH-0001/CD	TOP PLATE-3B-ETU-W/O HOLE	1
4	TH-0006/ZA	BURNER TRIPLE CROWN WOK CYCLIN	2
5	TH-0006/ZB	TRIPLE CROWN BODY WITH INJECTO	2
6	TH-0006/ZC	B/CAP TRIPLE CROWN INNER GLOSS	2
7	TH-0006/ZD	B/CAP TRIPLE CROWN OUTER GLOSS	2
8	TH-0016/BY	KNOB ETU (PART:305449900)	3
9	RH-0015/AB	RUBBER GROMMET NICOLE	3
10	TH-0006/YR	SABAF BURNER STAND-Z-(MEDIUM)	2
11	TH-0002/BE	BOTTOM PLATE-3BG-SABAF-D:22MM	1
12	TH-0004/BZ	I/PIPE 3B WITH FITTING(L:40.5)	1
13	GH-0025/AA	LOCAL : CONNECTOR	1
14	TH-0005/RA	IGNITION VALVE BRACKET(THH-006	3
15	TH-0004/PK	ALUM PIPE(TC)POWER/ETU-76SS	1
16	TH-0004/PN	ALUM PIPE(TC)76SS ETU-RIGHT	1

17	TH-0005/ZD	SPARKER FOR TRIPLE FRAME(GLAZE	2
18	TH-0005/AH	I/VALVE(S)BKP(J)III-100(CONNEC	3
19	TH-0015/AE	GASKET:OD 18.4 X ID 12MM	1
20	TH-0004/KD	FITTING NUT HEX(25.4 X L45.5MM	1
21	TH-0004/LC	OLIVE (DIA 7MM)	4
22	TH-0005/XB	GENERATOR 3P (SABAF)	1
23	TH-0005/VA	BATTERY BOX	1
24	H3-0013/AA	BATTERY (D)	1
25	H6-0041/AA	CABLE TIE [CV-100]	2
26	TH-0005/ZZ	SPARKER CLIP	3
27	TH-0005/UC	GENERATOR COVER (ALSTAR)	1
28	OT-0002/AA	SCREW-MSP 4 X 12 (SW) ZN	6
29	TH-0015/AH	GASKET FOR S/S SCREW	6
30	TH-0004/KH	M14 PLATING NUT HEX 17XM14X1.0	2
31	TH-0004/KI	TRIPLE FLAME NUT	2
32	TH-0018/AN	SCREW B(T10)M3 X 14BT(TAP)304	6
33	TH-0018/AK	SCREW M4 X 12(TAPLITE)	10
34	H2-0219/AP	SCREW-MSP 4 x 8 (SW)	3
35	H6-0037/AB	NUT HEX M4 [Blue Zink] 7mm	6
36	TH-0005/UE	BATTERY BOX COVER (ALSTAR)	1
37	TH-0004/PP	ALUM PIPE(S/RAPID)76SS ETU-RIG	1
38	TH-0005/ZE	SPARKER FOR SEMI RAPID(GLAZED)	1
39	TH-0006/YX	BURNER STAND-BIG-NICKY	1
40	TH-0006/ZE	BURNER CROWN SEMI RAPID CYCLIN	1
41	TH-0006/ZF	SEMI RAPID B/BODY W/0.71 INJEC	1
42	TH-0006/ZG	BURNER CAP SEMI RAPID GLOSS	1
43	TH-0008/NE	ROUND ENAMEL STAND(76SS ETU)	1
44	TH-0012/AA	GAS HOB BASE LINING	1
45	EH-0161/AB	BURBLE SHEET:880 X 580 X 10MM	1
46	H2-0202/CD	GUARANTEE CARD: ELECTROLUX	1
47	XH-0001/GA	BATTERY STICKER (XINBAO HOB)	1
48	TH-0019/AE	HOB POLYFOAM-ELECTROLUX-NICKY	1
49	TH-0019/DA	TRIPLE CROWN TOP PACK FOAM	2
50	TH-0019/DD	SEMI RAPID TOP PACK FOAM	1
51	TH-0020/AN	CUT OUT DIE THH(MULTI LANGUAGE	1
52	TH-0021/FG	HOB LINER-ELUX POWER/ETU76SS	1
53	TH-0022/ED	INST.MANUAL-ETU/POWER 76SS	1
54	TH-0023/BD	REGULATOR STICKER	1
55	TH-0023/BQ	GAS LEAKAGE WARNING SLIP-ELUX	1
56	TH-0026/AD	SHRINK TUBE-6MM X 100MM	2
57	TH-0027/FV	PACKING STICKER-EHG7332X(LPG)	2
58	TH-0027/GV	RATING LABEL-EHG7332X(LPG)	1
59	TH-0028/AA	GAS TYPE LABEL(LPG) ZANUSSI/	1

10. TROUBLE SHOOTING

Fault	Possible cause	Remedy
Burner will not light even though the spark plug is working	-Gas supply valve turned off	-Turn on gas supply to appliance
	-Control knob not on	-Turn knob on
	-Wrong knob turned	-Ensure the knob you are turning correspond to the burner you want to light
Burner will not light even though the spark plug is working	-Port blockage in ignition area	-Ensure that ports in ignition area are clean and dry
	-Ignition electrode wet or dry	-Dry or clean ignition electrode
	-Sparking at wrong point because of incorrectly fitted burner crown	-Ensure that crown is seated properly so that the spark fires to the receiving point in burner crown
No spark is obtained when the control knob is activated	-Battery is flat -Polarity wrong on battery -Ignition electrode wet or dry	-Replace battery -Re-orient battery to correct position -Dry or clean ignition electrode
Flames uneven or tending to lift	-Flame ports blocked or wet	-Clean or dry flame ports
	-Burner cap/crown incorrectly fitted	Ensure these components are fitted correctly
Low heat, slow cooking	Incorrect cooking utensil used	-Use only pots and pans with bases that fit the size of the burner
Flame won't turn down sufficiently	-Incorrect injector or gas control valve incorrectly adjusted	-Contact installer